

# *The Terracotta Animal Figurines*

---

*by I. Ali and G. Erdosy*

---

## **Introduction**

A total of 387 animal figurines were recovered from Rehman Dheri, of which 132 came from excavations and the rest from surface collections. The catalogue below will present 177 figurines; as with the anthropoid examples, it will include all the stratified objects as well as those surface finds, which either are of outstanding quality or add significantly to our knowledge of certain figurine types.

The most sensible classification of the animal figurines is based on species, although the procedure is not without problems. Chief amongst these is the generally schematic modelling of the figurines, which recalls the treatment accorded the human form. The problem is compounded by the inconsistent rendering of most body parts, which has also been observed at Harappa (Dales and Kenoyer 1990). As a result, the recognition of species becomes difficult in the absence of horns and such other facial features as nose and ears. Even among the latter, a wide range of variation may be observed as, for example, prominent drooping noses may be found among both sheep and cattle. As for the shapes of the torso, legs and tails, with a few exceptions they are of absolutely no use. Our difficulties are, nevertheless, alleviated by the predominance of humped cattle, an easily recognisable form: even in cases

where the (almost invariably applique) hump has broken off, its scar survives to inform us of the identity of the figurine.

Keeping those reservations in mind, the species-wise breakdown of the figurines is as follows:

Humped cattle	174
Other cattle (NB: of these, 5 are without hump, while 10 are too broken up to determine whether they are of the humped variety or not)	15
Sheep	9
Dog	15
Lion	2
Jackal	1
Elephant	2
Tiger	1
Mythical (double-headed)	1
Total Identifiable	220
Unidentifiable quadruped (NB: includes 35 detached legs)	111
Unidentifiable horned quadruped (NB: includes 21 detached horns)	56
<b>TOTAL</b>	<b>387</b>

As the table clearly shows, 86% of the recognisable specimens could be identified as cattle (and more than 90% of the latter were of the humped variety). Cattle thus outnumber sheep 21:1, a ratio that is high even by the standards of the Greater Indus Valley, where the economic and ritual importance of bovids have long been recognised.<sup>1</sup> Although the animal bones from the site have not yet received the attention they deserve, a cursory inspection would suggest that the dominance of cattle, although clear, is not so pronounced. This discrepancy alone makes the Rehman Dheri ensemble of terracotta animals interesting, and the interest is compounded by the existence,

<sup>1</sup> The ratio of 21:1 may be compared with a ratio of 10:1 established for figurines of the 1989 season at Harappa during preliminary analysis - see Dales and Kenoyer 1990. In fact, the proportion of cattle at Rehman Dheri could be even higher, since most of the unidentified quadrupeds, as well as the horns, appear to be of the bovine variety. Although given the difficulties just described that point should not be stressed too strongly, it may provide some assurance that the dominance of cattle is not due merely to the relatively high visibility of humped cattle.

albeit in limited numbers, of other species, including one mythical, double-headed animal.

---

## **Methods of Manufacture and Decoration**

Animal figurines, like their anthropoid counterparts, are fashioned out of micaceous clay, although their fabric falls into the coarser end of the spectrum. Firing in an oxidising atmosphere has produced their characteristically orange or buff colour; a few grey examples also occur. As with human figurines, several specimens were either overfired - sometimes to the point of warping the shape - or had a grey core. This is in striking contrast to the uniformly high quality of ceramics, and suggests poorer control over the firing of objects with a thick cross-section. Almost all examples were dipped in a slip, usually in red or cream colour, sometimes in brown or grey, and painted decoration, applied prior to firing, can also be frequently observed.

Patterns of breakage, as well as finger and tool impressions, are once again a guide to the processes of manufacture. The torso of each animal was shaped from a single lump of clay in the majority of cases. Exceptions are suggested only by hollow-bodied figurines, which are relatively rare and restricted to large examples; these were formed from two separate pieces. In one case the impression of a twig was observed in the middle of a solid body, suggesting that it may have been used to hold a figurine together prior to firing. Pinching and pressing with fingers appear to be the most popular methods of shaping, although, occasionally, prominent striation marks bespeak of scraping as well. In hollow examples the deep grooves of finger impressions are particularly clear on the interior, indicating that shaping was carried out at a time when the clay was still soft. Such finger impressions were, of course, generally smoothed over externally, perhaps with a brush or a comb, to judge by the frequent presence of shallow striation marks. At the joints of torso and limbs there are, occasionally, deep finger impressions created by the pressing of applique parts into the main body.

Only a few examples are broken at the neck, suggesting that the head was shaped from the same lump as the torso. On the other hand, humps and tails

were invariably applique, while legs, horns and noses were probably also so in the majority of cases. On breaking away from the main body, they leave scars which suggest that they were applied with the aid of a thin coat of clay; as already described, finger impressions at the juncture of limb and body may also be observed. Apart from horns and tails, which are well executed, the applique parts show little consistency in style and, particularly in the case of humps, no attention to details of proportion. The result, as already lamented above, is that the identification of species from fragmentary remains (at times even from complete examples) is difficult.

As regards decorative details, while applique decoration was sparingly used, painting of the body was much more frequent.<sup>2</sup> Although different patterns were employed, the most frequent motif for bovids consisted of parallel lines running obliquely from the tip of one front leg, across the hump, to the tip of the other, as well as from the tip of one rear leg, across the hips, to the tip of the other. At times, the space between two such lines was highlighted by the use of a cream slip (or by an unslipped surface) and further adorned with zigzag lines; in some cases the black lines bounding such patterns converge at the feet. Horizontal bands executed in black or - more rarely - chocolate brown may, in addition, be seen along the flanks of the animals, while the top of the head and the tips of horns may also be painted. The use of black - or cream-coloured - spots on the body is rarer; in one case, eye patterns were executed in black, red and cream, which may have mirrored such decoration on live animals. Species other than cattle are too few in number to allow generalisations regarding their surface treatment.

Facial features are given much less attention. Only a single example of applique eyes was observed, and even the painting of eyes - usually in cream within black borders - is rare. Incised mouths and impressed eyes and nostrils have, likewise, been observed but rarely. The folds of skin on the forepart of bulls, so prominent on Harappan seals, is seldom rendered, even though it could easily be produced by pinching. Musculature, as in the case of human figurines, is totally neglected. The impression of solid, fleshy

---

<sup>2</sup> One may, indeed, surmise that most, if not all, figurines were painted or at least slipped. It is only because the majority of figurines came from the surface, where they were subjected to severe weathering, that they now appear unadorned. The extent of the damage can be gauged from the fact that several pieces show elaborate painted decoration on one side and not a hint of it on the other, which had been exposed to the elements.



bodies created by the animal figurines may contrast with the standards achieved by the seal cutters, but it also presages - in the manner of anthropoid figurines - subsequent chapters in the history of South Asian art.

---

## Conclusions

Even if the corpus ranks low on aesthetic effect, it is highly informative in several respects. The already remarked stylistic continuity with later periods is itself very important. Mythical animals, such as two-headed cattle, might provide links to other mythological traditions, while the variety of species, even in limited numbers, yields information on the natural environment of the inhabitants.

However, the overwhelming dominance of cattle suggests a more serious dimension to animal figurines, especially if, as already suggested, it exaggerates the importance of bovids to subsistence. Although in the absence of contextual information it is difficult to even speculate on the function of animal figurines, contemporary observation would suggest that the majority were toys. Were this true in the past as well, and were the above hypothesis regarding the over-representation of cattle confirmed, then one could surmise that the latter may have formed the backbone of property relations and - by extension - social structure,<sup>3</sup> and its predominance in the plastic medium would reflect an attempt to impress the existing order of things on children from an early age. Regardless of the strength of that hypothesis, one must remember that the corpus of animal (or human) figurines is not likely to be a mere reflection of the natural world surrounding the inhabitants from Rehman Dheri; rather, it will tell us how the latter represented that world to themselves, and contributed to the maintenance of their social system in the process.

---

<sup>3</sup> The importance of cattle to the property structure of the Indus Valley Cultural Tradition, and its dynamic consequences, have already been emphasised in a series of important papers by Shaffer (1991, 1994) and Shaffer & Lichtenstein (1989). Analysis of faunal remains in the ancient sites of Pakistan has largely been the work of Richard Meadow (see esp. 1986 and in press), who is also putting his vast experience to use in a study of the animal figurines from Harappa. However, systematic comparisons of frequencies among bones and terracotta figurines (and seals) have yet to be performed.

---

## Notes on the Catalogue

As with human figurines, a serial number is included, which not only identifies the individual piece but also encodes its species (as detailed below). The meaning of the stratigraphic context has already been explained under 'beads' and 'human figurines'; level once again refers to the position of the object in the overall stratigraphic sequence divided into 20 units. Entries regarding fabric, surface treatment, body parts, applique features and description are self explanatory. As for dimensions, they have been defined in the following way:

- *Length (given in centimetres): maximum length, from nose to tail.*
- *Width (given in centimetres): maximum width of the figurine, excluding the horns.*
- *Minimum height (given in centimetres): from the feet to the top of the torso.*
- *Maximum height (given in centimetres): from the toes to the top of the head or - wherever preserved - the horns.*

---

## Corpus of Figurines

### *Category 1: Humped Cattle*

*(Catalogue numbers 2001-2072)*

The majority of identifiable figurines belong to this category. As already explained, the inconsistent modelling of body parts makes the task of identification difficult in most cases, but not here, since the presence of a hump is conclusive. The latter come in a wide variety of shapes, from narrow and pointed to enormous tumor-shaped projections; they may issue out of the back, but originate most frequently in the neck. With one exception they are applique, and frequently break off as a result, showing only a small scar.

Horns form another diagnostic category, as they are generally depicted curving upwards from the base, with only a few examples (e.g. #2066) projecting horizontally. The nose, by contrast assumes a wide variety of forms which are not unique to cattle, ranging from snub noses through drooping noses (the usual variety of nose for sheep), to long, thick, cylindrical affairs that are also found on dogs. Only a few are fashioned with care, with the mouth and nostrils being indicated by incision. Torsos are likewise varied in shape, and not sufficiently different from those of other species to be diagnostic. Only the prominence of hips may be an indication of bovid status along with slightly raised, narrow and long tails. Finally, legs also come in a variety of shapes that are once again not unique to the species.

Within the class of humped cattle it is difficult to create subdivisions since only a few attribute states can be correlated. On the whole, the catalogue lists first examples of naturalistic proportions, smooth contours, cylindrical torso and long legs. These gradually merge into cruder types until one arrives at squat and heavy torsos, short - and occasionally pinched - legs, rough surfaces and a general absence of painted decoration. At the end of the list (2061-2072) are badly broken fragments.

### *Category 2: Other cattle*

*(Catalogue numbers 2101-2105, 2195-2199)*

Several animals, while exhibiting all the attributes of the above type, possess neither humps nor their scars. There too few such pieces, however, to talk of any general characteristics. There are, in addition, a few pieces that appear to be clearly bovine: 2195 and 2199 because of their size and spotted decoration, 2196 to 2198 because of their long, thin and slightly raised tails issuing out of prominent hips.

### *Category 3: Sheep*

*(Catalogue numbers 2201-2209)*

Only their horns - shown in a prominent loop - allow us to identify sheep with any certainty. While their noses are invariably of the drooping type, the

same shape also occurs among cattle and, thus, is rendered useless as a diagnostic trait. Tails are somewhat more helpful but, unfortunately, are frequently broken and it is, thus, not always possible to identify the small triangular tails that sheep are usually (but not invariably) depicted with. Finally, the shape of the torso is inconsistent even in our small sample. All told, even accounting for these difficulties, the frequency of sheep is extraordinarily low at Rehman Dheri (1 to every 21 cattle figurines; less than 5% of all identifiable pieces).

### *Category 4: Dogs*

*(Catalogue numbers 2301-2314)*

Dogs are relatively numerous, with 15 examples in the corpus. Some are identifiable by their prominent snouts, some by the shape of their ears, and one example by the shape of its tail. There are, as well, several examples of crouching dogs; judging by one complete example found at Sarai Khola (Halim 1972: Plate XIII-A: 2), their noses would be of the prominent cylindrical variety.

### *Category 5: Miscellaneous*

Only a few examples of other species were recovered; 2 lions (to judge by their prominent manes; #2401, 2402), 1 jackal (#2410, shown with enormous ears), 2 elephant (only whose trunks survive; #2420, 2421) and 1 tiger (#2430; identification suggested by prominent circular impressions).

### *Category 6: Mythical*

One figurine (#2501) is shown with two heads; one of these belongs to a humped bull, the other - likely - to another bovid. For similar example, from Banawali, see *Indian Archaeology-a Review* 1986-87, Plate XIA.

### *Category 7: Unidentifiable Quadrupeds (2600-2653)*

These may be divided into several groups. First, there is a single figurine with a slim, elongated torso and long neck (#2600), which most closely resembles a horse, although even the latest levels of Rehman Dheri are probably too early for such an animal in South Asia. In the next group fall ##2601-2604, which have angular torsos and closely set legs - the first three seem to be without hump and may thus belong to Category 2; the fourth is too fragmentary for proper identification. ##2605-2615 are well modelled, cylindrical torsos with prominent hips and legs placed apart; these may well represent cattle. ##2616-2623 are similar except that their hips are unaccentuated; they could represent a wide range of species. ##2624-2626 are distinguished by their elongated torsos and long legs. ##2627-2630 have elongated, flattened and slightly arching torsos with widely spread hind legs for which no complete examples have survived. The rest of the pieces are too broken up for even a tentative identification to be chanced.

### *Category 8: Unidentified, Horned Quadrupeds (2701-2711)*

13 pieces show only a badly broken head or horn; judging by the upward curve of these horns, they are most likely parts of cattle figurines, which would raise their predominance in the assemblage even further.

---

## References

Dales, G.F. and Kenoyer, J.M. 1990. The excavations at Harappa, 1989. *Pakistan Archaeology* 25: 241-283.

Halim, M.A. 1972. Excavations in Sarai Khola, Part II. *Pakistan Archaeology* 8: 1-112.

Meadow, R.H. 1986. Faunal exploitation in the Greater Indus Valley: a review of recent work to 1980. In *Studies in the Archaeology of India and Pakistan*, ed. J. Jacobson, 43-64. Delhi: O.U.P.

Meadow, R.H. In Press. Animal domestication in the Middle East: a revised view from the Eastern Margin. In *Harappan Civilisation* (2nd, revised ed.), ed. G.L. Possehl. Delhi: O.U.P. and India Book House for the American Institute of Indian Studies.

Shaffer, J.G. 1991. The Indus Valley, Baluchistan and Helmand Traditions. In *Chronologies in Old World Archaeology* ed. R. Ehrich Jr., Volume 2, 441-484. Chicago: University of Chicago Press.

Shaffer, J.G. 1994. The concepts of cultural tradition and palaeoethnicity in South Asian archaeology. In *Language, Material Culture and Ethnicity: the Indo-Aryans of Ancient South Asia*, ed. G. Erdosy. Berlin and New York: Mouton de Gruyter (in press).

Shaffer, J.G. and Lichtenstein, D.L. 1989. Ethnicity and change in the Indus Valley Cultural Tradition. In *Old Problems and New Perspectives in the Archaeology of South Asia*, ed. J.M. Kenoyer, 117-127. Madison: Prehistory Press.



No	Trench	Square	Layer	Level	Length	Minheight	Maxheight	Width	Fabric	Colour	Slip	Painting	Form
2001	SURF	0	0	0	0.0	0.0	13.3	6.9	Medium	Orange	Red	Black	Curving Upwards, Broken
2002	BIV	14	9	11	11	9.5	0.0	5.8	Medium	Orange	Red And Cream	Black	Thick, Curving Upwards
2003	SURF	0	0	0	10.5	6.7	10.3	4.7	Coarse	Orange	Dark Brown	Black	Short, Horizontal
2004	BIV	14	4	6	0.0	0.0	9.8	0.0	Coarse	Orange	Red	Black	Short, Curving Upwards, Broken
2005	SURF	0	0	0	8.1	4.2	8.7	2.9	Fine	Orange	Red	-	Long, Curving Upwards
2006	BIV	14	3	5	0.0	0.0	0.0	4.0	Coarse	Orange	Red	Polychrome	Curving Upwards
2007	BIV	9	5	6	0.0	0.0	0.0	3.2	Fine	Orange	Red	-	Thick, Curving Upwards, Broken
2008	BIV	25	3	12	8.7	0.0	0.0	2.7	Fine	Buff	Red And Cream	Brown	Curving Upwards, Broken
2009	FIV	17	11	11	6.3	3.5	0.0	2.2	Medium	Orange	Red And Cream	Black	Broken
2010	BIV	14	3	5	0.0	0.0	0.0	3.1	Coarse	Orange & Grey Core	Red	Black	Broken
2011	CIII	21	1	4	8.4	0.0	0.0	2.4	Coarse	Orange	Red	Black	Thick, Curving Upwards
2012	SURF	0	0	0	7.9	0.0	0.0	2.7	Medium	Orange-Brown	Red	Black	Broken
2013	SURF	0	0	0	5.7	3.0	5.2	1.7	Fine	Orange	Dark Red	Black	Short, Curving Upwards
2014	BIV	14	2	3	9.0	0.0	0.0	3.6	Coarse	Orange	Red	-	Broken
2015	Ddi	24	1	7	0.0	0.0	0.0	0.0	Coarse	Orange	-	-	Broken
2016	BIV	14	4	6	10.3	5.0	6.5	4.0	Coarse	Red	Red	-	Curving Upwards, Broken
2017	SURF	0	0	0	0.0	0.0	8.5	4.0	Medium	Red	Dark Red	Black	Long, Curving Upwards
2018	EII	17	0	0	0.0	0.0	0.0	0.0	Coarse	Orange	Red	-	Broken
2019	BIV	20	2	7	0.0	0.0	0.0	0.0	Medium	Orange	Brown	-	Broken
2020	BIV	14	7	9	0.0	0.0	0.0	0.0	Medium	Orange	Red	Black	Broken
2021	FIV	17	3	3	0.0	0.0	0.0	2.3	Coarse	Orange	Red	-	Broken
2022	SURF	0	0	0	0.0	0.0	0.0	0.0	Fine	Red	-	Black	Curving Upwards, Broken
2023	SURF	0	0	0	0.0	0.0	0.0	0.0	Coarse	Orange	Red	Black	Short, Curving Upwards
2024	CIV	21	5	16	0.0	0.0	0.0	0.0	Fine	Orange & Grey Core	Red	-	Long, Thin, Curving Upwards
2025	SURF	0	0	0	0.0	0.0	0.0	0.0	Fine	Orange	Red	-	Long, Thick, Curving Forward
2026	SURF	0	0	0	0.0	0.0	0.0	0.0	Coarse	Orange	Red	-	Long, Curving Backwards
2027	SURF	0	0	0	8.2	2.9	6.5	1.7	Coarse	Orange	Red	-	Curving Upwards, Broken
2028	BIV	25	4	17	8.4	3.6	0.0	2.8	Fine	Orange	Red	Brown	Broken



No	Nose	Legs	Tail	Applique	Description
2001	Prominent, Drooping	Long, Cylindrical, Set Apart	Broken	Horns, Nose, Hump, Legs	Large, well modelled, hollow bull, only front portion preserved. Black bands and intersecting oblique lines decorate the body. Mouth, eyes, nostrils all shown along with fold of skin under the head.
2002	Prominent, Drooping	Short, Set Apart	Thin, Broken	Horns, Nose, Hump, Legs, Tail	Complete except for horns and tip of tail. Bands of red slip on flanks and down to knees. Oblique black bands on red and cream slip across the front and back of the torso down to the feet.
2003	Prominent, Drooping	Long, Thin, Set Apart	Broken	Horns, Nose, Hump, Legs, Tail	Finely modelled humped bull with traces of a dark brown slip and black paint, badly damaged by salt. Prominent backside decorated by punched circlets in an arc, down to the upper thighs.
2004	Prominent, Pointed	Short, Thick	Broken	Horns, Hump, Legs	Head, left horn and left leg of humped bull. Two oblique black lines from leg to hump enclose unslipped surface, where four parallel zigzag lines are painted in black. Eyes painted in black & cream.
2005	Prominent, Cylindrical	Naturalistic, Set Apart	Thin, Slightly Raised, Broken	Horns, Nose, Hump, Legs, Tail	Well proportioned body of humped bull with hump and tail broken off.
2006	Prominent, Drooping	Broken	Broken	Horns, Nose, Hump	Enormous, well modelled head and hump, decorated with intersecting black lines with cream paint between them, also a black triangle filled with cream paint on top of head. Nostrils, mouth also shown.
2007	Prominent, Pinched	Set Apart, Broken	Broken	Horns, Hump, Nose, Legs	Head and torso of large humped bull with legs broken off. Only a small scar is left in place of the hump.
2008	Prominent, Drooping	Thick, Set Close	Short	Horns, Nose, Hump, Legs, Tail	Oblique black lines enclose cream-slipped surface with wavy black line in middle, found on front and rear of torso. Triangular cream slipped surface with black lines also on top of head. Humped bull.
2009	Broken	Short, Conical, Set Apart	Long, Thick	Hump, Legs, Tail	Small humped bull, well proportioned. Left side weathered. Oblique black lines enclose cream slipped surface and are joined by a black zigzag line, both on the front and rear of the body.
2010	Broken	Short, Thick, Set Apart	Broken	Hump, Legs	Torso and front legs of humped bull. Oblique black lines across torso and horizontal black lines along the flanks. Only scar of the hump is visible.
2011	Prominent, Drooping	Broken	Thick, Broken	Horns, Nose, Hump, Legs, Tail	Humped bull with elongated body. Traces of oblique black lines on torso from legs upwards.
2012	Snub, Pinched	Broken	Thick, Broken	Horns, Hump, Legs, Tail	Humped bull with legs and horns broken. Overfired. Traces of oblique black lines across torso from legs upward.
2013	Prominent, Drooping	Short, Set Close	Short, Thin	Horns, Nose, Hump, Legs, Tail	Well modelled humped bull with black dots decorating most of the body on a dark red slip. Hump broken off.
2014	Broken	Short, Thick, Set Apart	Thick, Slightly Raised, Broken	Hump, Legs, Tail	Torso of humped bull; thick in stature; head and legs broken off.
2015	Prominent, Cylindrical	Broken	Broken	Horns, Nose, Hump	Head, forepart of humped bull. Badly weathered.
2016	Prominent, Drooping	Short, Thick	Thick, Broken	Horns, Nose, Hump, Legs, Tail	Right half of humped bull with centre badly weathered. Figurine was probably made of two halves joined longitudinally, judging by the pattern of breakage. Ears also indicated.
2017	Small, Drooping	Short, Set Close	Broken	Horns, Nose, Hump, Legs	Head and forepart of humped bull. Although poorly executed, it shows the ears and the fold of skin under the head, created by pinching. Traces of a black line visible on hump.
2018	Prominent, Pointed	Broken	Broken	Horns, Hump, Legs	Left forepart of a humped bull. Legs, horns and hump all broken off.
2019	Prominent, Pinched	Broken	Broken	Horns, Hump	Broken head and hump of bull.
2020	Prominent, Cylindrical	Short, Thick, Set Wide Apart	Broken	Horns, Hump	Head, hump and forelegs of bull, traces of a dark red slip with oblique black lines across the forelegs and hump.
2021	Broken	Set Close, Broken	Broken	Hump, Legs	Broken forepart of humped bull with prominent hump.
2022	Prominent, Drooping	Broken	Broken	Hump, Nose	Finely modelled head of a large humped bull with incised nostrils, mouth and painted eyes. Traces of oblique black lines also across the neck.
2023	Prominent, Pointed	Broken	Broken	Horns, Hump, Nose	Right horn and right side of face of a large, well modelled humped bull. Traces of oblique black lines across the (broken) hump.
2024	Prominent, Cylindrical	Broken	Broken	Horns, Nose, Hump	Head and horns of (probably) humped bull, large and finely modelled.
2025	Short, Cylindrical	N/A	N/A	Horns, Hump, Nose	Head of humped bull; ends of horns broken off; only scar of hump remains.
2026	Prominent, Pointed	Broken	Broken	Horns, Nose, Hump	Head and neck of humped bull, with only a small hump scar visible. Finely modelled.
2027	Prominent, Pointed	Short, Thick, Close	Broken	Horns, Nose, Hump, Legs, Tail	Humped bull with elongated neck and thin, cylindrical body. Only the scar of the hump remains.
2028	Prominent, Cylindrical	Short, Set Apart, Pinched(?)	Broken	Horns, Nose, Hump, Legs, Tail	Crudely modelled humped bull with oblique black lines painted across its torso from the legs upwards. Prominent hips, hump mostly broken off.

No	Trench	Square	Layer	Level	Length	Minheight	Maxheight	Width	Fabric	Colour	Slip	Painting	Horn
2029	CIII	21	1	4	7.0	0.0	0.0	2.7	Fine	Orange	Red	-	Broken
2030	D0	5	1	7	5.2	2.9	0.0	1.9	Coarse	Orange	Red	Black	Broken
2031	CIV	21	3	11	8.3	4.8	6.9	3.4	Fine	Orange	Brown	-	Thick, Curving Upwards
2032	E0	6	1	7	6.7	2.8	5.4	1.8	Fine	Buff	Red	-	Short, Curving Upwards
2033	BIV	9	18	20	4.2	2.5	0.0	1.7	Coarse	Orange	Red	-	Broken
2034	BIV	4	16	16	6.2	2.7	4.3	2.5	Fine	Orange	Red	Black	Curving Upwards, Broken
2035	F0	13	1	9	5.2	2.6	4.5	2.2	Coarse	Orange	-	-	Curving Upwards, Broken
2036	BIV	23	2	8	7.3	0.0	0.0	2.0	Coarse	Orange	-	-	Broken
2037	BIV	14	7	9	5.6	3.3	4.7	2.6	Fine	Orange	Red	-	Curving Upwards, Broken
2038	CIII	21	1	4	5.9	0.0	4.2	2.0	Coarse	Orange-Red	Red	-	Short, Curving Upwards
2039	F0	3	2	9	5.8	2.8	0.0	2.4	Medium	Orange	Red	-	Broken
2040	EII	17	1	1	5.5	3.6	0.0	2.5	Crude	Orange	Red	-	Broken
2041	EII	16	0	0	6.6	0.0	0.0	2.7	Coarse	Orange	-	-	Broken
2042	FIV	17	8	8	7.5	3.5	4.8	1.9	Coarse	Orange	Red	Brown	Curving Upwards, Broken
2043	BIV	4	2	2	7.7	3.6	5.7	2.2	Coarse	Red	Dark Brown	Black	Short, Curving Upwards
2044	SURF	0	0	0	0.0	3.8	4.7	2.7	Fine	Buff	Brown	-	Curving Upwards, Broken
2045	SURF	0	0	0	0.0	0.0	0.0	3.9	Coarse	Orange	-	-	Curving Upwards, Broken
2046	F0	3	1	8	6.5	0.0	0.0	2.7	Medium	Buff	-	-	Broken
2047	FII	23	3	9	6.5	0.0	0.0	2.7	Coarse	Orange	Red	-	Long, Thick, Horizontal
2048	EII	17	2	2	0.0	0.0	0.0	2.7	Medium	Orange	Red	-	Broken
2049	BIV	4	4	4	7.1	0.0	0.0	2.4	Coarse	Orange	-	-	Broken
2050	SURF	0	0	0	0.0	0.0	0.0	0.0	Fine	Orange	Red	Black	Curving Upwards, Broken
2051	F0	3	2	9	5.5	2.3	4.5	2.2	Medium	Orange	Cream	-	Broken
2052	FIV	22	3	3	4.6	2.2	3.6	1.9	Coarse	Buff	-	-	Broken
2053	BIV	9	14	16	4.8	2.5	3.5	2.2	Fine	Orange	Red	-	Curving Upwards, Broken
2054	CIII	21	3	6	5.3	0.0	0.0	2.8	Coarse	Orange	-	-	Broken
2055	SURF	0	0	0	4.3	2.1	3.5	2.0	Fine	Orange	Red	-	Curving Upwards, Broken
2056	BIV	19	10	16	3.5	3.2	0.0	1.5	Fine	Orange	Red	-	Broken
2057	BIV	5	2	2	4.2	2.2	3.2	2.8	Fine	Buff	Brown	-	Broken

No	Nose	Legs	Tail	Applique	Description
2029	Pointed?, Broken	Broken	Thick, Broken	Horns, Hump, Legs, Tail	Finely modelled torso of humped bull, but badly broken
2030	Broken	Short, Thick, Set Close	Broken	Hump, Legs(?), Tail	Badly weathered bull with head and hump broken off. Traces of oblique black line up the rear leg and across the hips
2031	Prominent, Drooping	Short, Thick, Set Apart	Thick, Broken	Horns, Nose, Hump, Legs, Tail	Well modelled humped bull with a prominent hip and large hump
2032	Prominent, Pinched	Short, Set Apart, Pinched	Short, Thin	Horns, Hump, Tail	Complete figurine of clumsily modelled bull with enormous hump
2033	Broken	Small, Set Apart, Pinched(?)	Long, Thin	Hump, Tail	Small, crudely modelled humped bull with bands of red slip along spine & tail, as well as along the flanks. Head mostly broken off
2034	Prominent, Pointed	Short, Set Apart, Broken	Short, Thin	Horns, Nose, Hump, Legs, Tail	Small, well modelled humped bull with prominent hips and slightly raised tail. Traces of oblique black lines around hind quarters. Tips of legs and horns broken
2035	Snub	Short, Thick, Set Apart	Slightly Raised, Broken	Horns, Hump, Legs, Tail	Crude, badly weathered humped bull; hump broken off and only scar remains
2036	Prominent, Pinched	Broken	Slightly Raised, Broken	Horns, Nose, Hump, Legs, Tail	Small, humped bull with prominent hips and large hump
2037	Snub	Short, Set Apart, Pinched	Slightly Raised, Broken	Horns, Hump, Tail	Small, crudely modelled humped bull with slightly raised tail
2038	Prominent, Drooping	Short, Thick, Set Apart	Long, Thin	Horns, Nose, Hump, Legs(?), Tail	Small, weathered figurine of humped bull. Legs and tail are broken and only the scar of the hump is visible
2039	Snub?, Broken	Short, Thick, Set Apart	Short, Thick	Hump, Legs, Tail	Small, crudely modelled humped bull with hump, horns and 2 legs broken
2040	Broken	Short, Conical, Set Apart	Long, Thick	Hump, Legs, Tail	Crudely modelled figurine of humped bull(?) with prominent hips. The coarse fabric is over-fired and crumbly, the head is broken off
2041	Broken	Short, Thick, Apart	Broken	Eyes, Hump, Horn, Legs, Tail	Only torso, rear left leg and part of head preserved, applique eyes and pinched snub nose, scar of broken off hump. Prominent hips. Extensive salt damage
2042	Prominent, Pointed	Short, Set Apart, Pinched	Slightly Raised, Broken	Horns, Hump, Tail	Nearly complete humped bull with two thick, oblique brown bands painted across the front leg/hump and rear leg/hips. Horns and tips of legs and tail are broken. Hips are prominent
2043	Prominent, Pointed	Short, Thick, Set Apart	Long, Thin, Slightly Raised	Horns, Nose, Hump, Legs, Tail	Nearly complete humped bull with prominent hips and oblique black lines painted across body. Modelling crude, with deep finger impressions
2044	Snub	Short, Close, Pinched(?)	Broken	Horns, Hump	Forepart of small, humped bull
2045	Small, Drooping	Broken	Broken	Hump, Horns, Nose, Legs	Thick-set body of bull with a deep scar in place of the hump. Only the forepart is preserved
2046	Snub	Broken	Broken	Horns, Hump, Legs	Short, thick torso of humped bull with prominent hips. Crudely modelled
2047	Snub	Broken	Thick, Broken	Horns, Hump, Legs, Tail	Crudely modelled, thick-set humped bull. Badly weathered
2048	Snub?, Broken	Broken	Broken	Horns, Hump, Legs	Front portion of a thick-set humped bull. Only the scar of the hump is now visible
2049	Snub, Pinched	Broken	Short, Thin	Horns, Hump, Legs, Tail	Small, crudely modelled humped bull
2050	Small, Pointed	Short, Set Close, Broken	Broken	Horns, Hump, Legs	Forepart of a heavy-set body with small head and prominent hump. Bands of black lines intersecting obliquely on the torso
2051	Snub	Short, Set Apart, Pinched	Long, Slightly Raised, Broken	Horns, Hump, Tail	Small, crudely modelled humped bull
2052	Snub	Short, Thick	Broken	Hump, Legs, Tail	Small, crudely modelled humped bull. Overfired and of crumbly texture
2053	Snub	Short, Set Apart, Pinched	Short, Thin	Horns, Hump, Tail	Small, crudely modelled humped bull with prominent hips. Only the scar of the hump remains
2054	Small, Pointed	Thick, Broken	Short, Thin	Horns, Hump, Legs, Tail	Crudely modelled humped bull with horns and legs broken
2055	Snub, Broken	Short, Set Apart, Pinched	Broken	Horns, Hump, Tail	Small, crudely modelled humped bull
2056	Broken	Short, Thick, Set Apart	Slightly Raised, Broken	Hump, Legs, Tail	Small bull with a pinched hump, crudely modelled
2057	Prominent, Drooping	Short, Set Wide Apart, Pinched	Short, Thick	Horns, Hump, Tail	Small, crudely modelled bull with big hump and prominent hips

No	Trench	Square	Layer	Level	Length	Minheight	Maxheight	Width	Fabric	Colour	Slip	Painting	Form
2058	SURF	0	0	0	5.4	2.4	4.9	2.3	Coarse	Orange	Red	-	Short, Curving Upwards
2059	BIV	14	1	2	4.9	2.5	4.3	1.7	Medium	Orange	Red	-	Short, Upwards
2060	CIII	21	9	12	3.2	1.7	3.2	1.2	Medium	Orange	Brown	-	Curving Upwards
2061	EII	16	9	9	0.0	0.0	0.0	0.0	Coarse	Orange	Red	-	Broken
2062	FIV	22	3	3	0.0	0.0	0.0	1.6	Fine	Buff	Cream	-	Thick, Curving Upwards, Broken
2063	BIV	14	9	11	0.0	0.0	0.0	0.0	Coarse	Orange	Red	Brown	Curving Upwards, Broken
2064	CIII	21	1	4	0.0	0.0	0.0	0.0	Fine	Orange	Dark Brown	-	Broken
2065	SURF	0	0	0	0.0	0.0	0.0	0.0	Coarse	Orange	Brown	Black	Short, Curving Upwards
2066	CIII	21	1	4	0.0	0.0	0.0	3.3	Medium	Grey	Red	Polychrome	Long, Straight, Horizontal
2067	BIV	20	7	12	0.0	0.0	0.0	0.0	Coarse	Orange	Red	Black	Long, Thin, Curving Upwards
2068	SURF	0	0	0	0.0	0.0	0.0	0.0	Fine	Orange	Red	-	Long, Thin, Curving Upwards
2069	BIV	20	1	3	0.0	0.0	0.0	0.0	Fine	Buff	-	-	Long, Thin, Curving Upwards
2070	BIV	5	1	1	0.0	0.0	0.0	0.0	Coarse	Orange	Red	-	Long, Thick, Curving Upwards
2071	SURF	0	0	0	0.0	0.0	0.0	0.0	Coarse	Orange	Dark Red	Black	Broken
2072	BIV	9	7	8	3.0	0.0	2.7	1.8	Fine	Orange	Red	-	
2101	SURF	0	0	0	6.9	3.5	5.3	2.0	Fine	Orange	Red	Black	Curving Forward, Broken
2102	SURF	0	0	0	4.8	1.3	2.8	1.7	Fine	Orange	Red	-	Thick, Curving Forward
2103	BIV	14	14	17	0.0	4.0	5.5	1.8	Fine	Orange	Red And Cream	-	Long, Curving Upwards
2104	SURF	0	0	0	6.7	0.0	0.0	2.4	Coarse	Orange-Red	Red	-	Broken
2105	F0	3	1	8	8.5	0.0	0.0	2.3	Coarse	Orange	-	-	Broken
2195	FIV	22	3	3	0.0	0.0	0.0	7.6	Coarse	Orange	Red	Black	Broken
2196	BIV	4	4	4	0.0	0.0	0.0	3.1	Coarse	Orange	Red	Black	Broken
2197	BIV	4	4	4	0.0	5.7	0.0	3.4	Fine	Orange	Brown	-	Broken
2198	SURF	0	0	0	0.0	0.0	0.0	2.6	Coarse	Orange	-	Brown	Broken
2199	BIV	5	3	3	0.0	0.0	0.0	6.0	Medium	Orange	Red	Polychrome	Broken
2201	BIV	9	16	18	0.0	0.0	0.0	1.9	Fine	Buff	Brown	-	Long, Looping
2202	SURF	0	0	0	6.0	3.5	4.5	2.0	Medium	Orange	Red	-	Short, Looping
2203	SURF	0	0	0	5.3	2.3	3.6	1.2	Medium	Orange	Red	-	Curving Forward?

No	Nose	Legs	Tail	Applique	Description
2058	Prominent, Pointed	Short, Set Wide Apart	Broken	Horns, Hump, Legs, Tail	Small humped bull with prominent elongated hump.
2059	Prominent, Pinched	Short, Set Apart	Short, Thin, Broken	Horns, Nose, Hump, Legs, Tail	Small, crude figurine of humped bull. Hump is broken off.
2060	Prominent, Pointed	Short, Set Wide Apart	Broken	Hump, Horns, Tail	Small, disproportionate humped bull with large head and hips and tiny body and legs.
2061	Broken	Short, Thick, Set Close	Broken	Hump, Legs	Broken up forepart of a bull with a prominent hump.
2062	Prominent, Slightly Drooping	Broken	Broken	Horns, Hump, Nose	Upper part of a humped bull with broken horns.
2063	Drooping	Broken	Broken	Horns, Nose, Hump, Tail	Head and forepart of humped bull; oblique brown lines on unslipped surface across the hump, connected by a brown zigzag-shaped line.
2064	Prominent, Broken	Set Close, Broken	Broken	Horns, Nose, Hump, Legs	Small fragment of humped bull; indistinct
2065	Short, Pinched (?)	Broken	Broken	Horns, Hump	Broken fragment of bull figurine with prominent hump. Traces of oblique black lines across the latter.
2066	Prominent, Slightly Drooping	Broken	Broken	Horns, Nose, Hump	Head and horns of (probably) cattle. Horns are painted in black, the top of the nose in cream with a black zigzag line in the middle. Rest is red slipped.
2067	Snub, Pinched	Broken	Broken	Horns, Hump	Head and forepart of humped bull, with oblique black lines across the hump. Right side badly eroded by salt.
2068	Prominent, Cylindrical	Broken	Broken	Hump, Horns, Nose	Head and hump of bull. Sides of head as well as the prominent nose are decorated with red slip, the rest is untreated.
2069	Prominent, Drooping	Broken	Broken	Horns, Nose, Hump	Head, horns and hump of bull figurine.
2070	Small, Drooping	Broken	Broken	Horns, Hump, Nose	Nose, left horn of humped bull.
2071	Prominent, Cylindrical	Broken	Broken	Hump, Nose, Horns	Head of humped (?) bull with enormous, cylindrical nose, with floral motif executed on the end of the latter. Traces of oblique black lines also visible on the nose.
2072	Snub	Broken	Broken	Hump	Broken off hump of bull, with a hollow scar at the point of attachment.
2101	Prominent, Pointed	Short, Thick, Set Apart	Thick, Broken	Horns, Nose, Legs, Tail	Small, well modelled body of bull without hump. Black oblique lines across torso, as well across the chest and along the flanks.
2102	Short, Pointed	Short, Thick, Set Apart	Long (?), Thick, Broken	Horns, Legs, Tail	Small, crudely modelled body of bull, apparently without hump.
2103	Small, Pointed, Drooping	Long, Conical, Set Apart	Broken	Horns, Nose (?), Legs	Forepart of finely modelled bull without hump. Head and horns highlighted in red, and the rest of the body in cream, slip.
2104	Snub	Broken	Short, Thick	Tail	Badly weathered bull figurine, apparently without a hump. Fold of skin under nose is highlighted by pinching, a rare occurrence among the Rehman Dheri bulls.
2105	Broken	Long, Thin, Set Close	Short (?), Thick, Broken	Legs, Tail	Elongated torso, broken legs and head of cattle. No hump or scar visible. Shape of tail and torso suggests that it is a bovid.
2195	Broken	Broken	Broken	-	Fragment of an enormous animal, with only the lower part of the chest surviving. Black polka dot decoration on the sides between oblique black lines, on a red slip, hence must be cattle. Hollow body.
2196	Broken	Short, Thick	Long, Thick, Broken	Hump, Legs, Tail	Thick body of humped (?) bull decorated with parallel black lines.
2197	Broken	Short, Set Apart, Pinched (?)	Long, Thin, Slightly Raised	Tail	Hind part of a thick-set quadruped; the shape of the tail suggests that it is a bull. Finely modelled, even if heavy in appearance.
2198	Broken	Short, Cylindrical, Set Apart	Slightly Raised, Broken	Legs, Tail	Hind portion with prominent hips and slightly raised tail, indicating that it is a bovid.
2199	Broken	Long, Conical, Set Apart	Broken	Legs	Hind quarters of large quadruped; hollow interior with finger impressions. Decoration suggests bovid species: cream-coloured dots as well as brown oblique and zigzag lines on cream background on legs.
2201	Prominent, Thick	Broken	Broken	Horns, Nose (?)	Forepart of ram with broken legs and a slight hump. Finely modelled horns.
2202	Prominent, Aquiline, Pointed	Short, Thick, Set Apart	Short, Thick, Triangular	Horns, Nose, Legs, Tail	Thick-set body of ram, almost complete.
2203	Prominent, Cylindrical	Short, Thin, Set Apart	Short, Thick, Triangular	Horns, Nose, Legs(?), Tail	Small ram figurine with enormous head, horns and hip, but thin body and legs.

No	Trench	Square	Layer	Level	Length	Minheight	Maxheight	Width	Fabric	Colour	Slip	Painting	Horn
2204	E0	6	1	7	8.3	3.6	5.6	2.3	Medium	Orange	Red	-	Thick, Curving Upwards
2205	BIV	20	2	7	5.4	0.0	0.0	1.5	Fine	Orange	Red	-	Curving Forward?
2206	SURF	0	0	0	0.0	0.0	0.0	0.0	Coarse	Orange	Red	-	Short, Looping
2207	D0	5	3	9	5.4	2.6	0.0	1.8	Fine	Orange	Red	-	Looping, Broken
2208	BIV	4	15	15	5.0	1.9	3.3	1.6	Coarse	Orange	Red	-	Broken
2209	SURF	0	0	0	0.0	0.0	0.0	0.0	Medium	Orange	Red	-	Long, Looping
2301	CIV	21	2	10	7.4	2.9	5.3	0.0	Coarse	Grey	-	Brown	N/A
2302	SURF	0	0	0	0.0	0.0	0.0	0.0	Fine	Orange	-	-	N/A
2303	BIV	10	6	7	5.0	0.0	0.0	0.0	Fine	Orange	Buff	-	N/A
2304	SURF	0	0	0	4.5	1.8	2.0	1.5	Coarse	Brown	Dark Grey	-	N/A
2305	SURF	0	0	0	0.0	2.3	4.0	2.0	Coarse	Grey	-	-	N/A
2306	FII	23	2	8	0.0	0.0	0.0	0.0	Coarse	Dark Grey	Dark Grey	-	N/A
2307	SURF	0	0	0	6.5	0.0	4.5	2.1	Coarse	Orange	-	-	N/A
2308	SURF	0	0	0	0.0	0.0	0.0	3.0	Medium	Orange	Red	-	N/A
2309	FII	23	2	8	0.0	0.0	0.0	0.0	Medium	Orange	-	-	N/A
2310	BIV	14	5	7	0.0	0.0	0.0	1.7	Coarse	Orange Red	-	-	N/A
2311	SURF	0	0	0	0.0	0.0	0.0	0.0	Fine	Orange	-	-	N/A
2312	FII	18	6	12	9.5	2.6	0.0	3.5	Coarse	Orange	-	-	N/A
2313	FIIV	17	1	1	0.0	2.3	0.0	2.4	Medium	Orange	-	-	N/A
2314	SURF	0	0	0	0.0	2.3	0.0	3.8	Coarse	Orange	-	-	N/A
2401	SURF	0	0	0	0.0	4.7	6.7	2.5	Fine	Orange	Red	-	N/A
2402	BIV	10	0	0	4.4	2.1	3.3	1.7	Medium	Orange	-	-	N/A
2410	SURF	0	0	0	5.8	2.2	4.1	1.6	Medium	Orange	-	-	N/A
2420	BIV	5	1	1	8.0	0.0	0.0	0.0	Fine	Orange	Reddish Brown	-	N/A
2421	SURF	0	0	0	0.0	0.0	0.0	0.0	Fine	Orange	-	-	N/A
2430	BIV	4	16	16	0.0	2.4	3.2	1.4	Medium	Orange	Red	-	N/A
2501	SURF	0	0	0	8.2	3.2	4.5	2.2	Coarse	Orange	Red	-	Curving Forward/Broken
2600	SURF	0	0	0	5.9	2.5	4.9	1.5	Coarse	Orange	Red	-	Broken
2601	BIV	5	1	1	6.8	0.0	4.0	2.2	Fine	Orange	-	-	Broken
2602	DdI	24	1	7	7.0	0.0	0.0	1.7	Medium	Buff	-	-	Broken
2603	FIIV	17	4	4	7.0	0.0	0.0	2.0	Fine	Orange	-	-	Broken

No	Nose	Legs	Tail	Applique	Description
2204	Drooping, Nostrils Shown	Short, Thick	Long, Thick	Horns, Nose, Legs, Tail	Thick-set body of ram, with well modelled face showing eyes, mouth and nostrils through incision.
2205	Prominent, Drooping	Broken	Short, Triangular	Horns, Nose, Legs, Tail	Small figurine of ram with a large head and looping but broken horns.
2206	Snub	Broken	Broken	Horns	Broken and weathered forepart of ram with a hole through the forehead.
2207	Drooping	Short, Conical, Set Apart	Broken	Horns, Nose, Legs, Tail	Small, well modelled figurine of ram.
2208	Prominent, Pointed	Short, Set Apart, Pinched (?)	Broken	Nose	Small, weathered, figurine with prominent pointed nose. It appears to be a ram.
2209	Broken	Broken	Broken	Horns	Finely modelled left horn of ram; curving forward.
2301	Prominent, Cylindrical	Short, Crouching	Long, Thin	Nose, Legs, Tail	Right half of dog figurine, sitting on its hind legs and perking up its ears. Deep finger impressions visible on body.
2302	Prominent, Cylindrical	Broken	Broken	Nose	Finely modelled, but badly broken head of dog. Body possibly hollow and perforated through the right earlobe.
2303	Prominent, Cylindrical	Broken	Broken	Ears, Nose	Small, crudely modelled dog, only the front portion of preserved.
2304	Prominent, Pinched	Short, Pinched	Long, Fat	Tail	Small, crudely modelled and overfired dog(?) figurine.
2305	Small, Pointed	Short, Set Apart	Broken	Ears(?), Nose, Legs (?)	Small, crudely modelled dog figurine. Only the front portion survives. Overfired.
2306	Prominent, Cylindrical	Broken	Broken	Nose	Head of a dog. Signs of scraping in the back; overfired.
2307	Snub	Short, Pinched	Broken	Tail	Crudely modelled and weathered figurine of dog.
2308	Prominent, Cylindrical	Broken	Broken	Nose	Head and front portion of dog, with enormous snout and finely modelled, perked up ears.
2309	Prominent, Cylindrical	Broken	Broken	Nose, Ears (?)	Head of dog with enormous snout and finely modelled perked up ears.
2310	Prominent, Cylindrical	Broken	Broken	Nose	Head and front portion of dog with enormous nose.
2311	Broken	Broken	Curling Upwards	Tail	Cylindrical torso and curled up tail; although the rest of the body is broken, it appears to belong to a dog.
2312	Broken	Long, Slim, Crouching	Prominent, Broken	Legs	Crouching dog with head and prominent tail snapped off. Rear legs extended by the side of the torso; front legs broken off. For a complete example see Halim 1972: Plate XIII A: 2.
2313	Broken	Long, Slim, Crouching	Prominent, Broken	Legs	Rear of crouching dog with rear legs extended along the torso and with short, pinched tail. For a complete example see Halim 1972: Plate XIII A: 2.
2314	Broken	Short, Tapering, Crouching	Short, Pinched	Legs	Rear of crouching dog; rear legs extended along the torso. Short, pinched tail. Heavy weathering. For a complete example see Halim 1972: Plate XIII A: 2.
2401	Prominent, Broken	Broken	Broken	Legs, Nose.	Forepart of a seated lion (?), legs are broken off. Eyes and nostrils are indicated, and prominent mane (which suggests that it is indeed a lion) is pinched.
2402	Prominent, Conical	Short, Set Apart, Pinched(?)	Broken	Legs(?)	Small, badly weathered lion figurine.
2410	Prominent, Pointed	Short, Set Apart	Broken	Ears (?), Legs, Tail	Broken body of figurine; shape of ears and nose suggests that it depicts a jackal. Scar in place of front left leg clearly shows that it was attached separately.
2420	Broken	Broken	Broken	Trunk	Broken trunk of an elephant.
2421	Broken	Broken	Broken	Trunk	Broken trunk of an elephant.
2430	Snub, Broken	Short, Thin, Set Apart	Broken	Legs	Front portion of tiger(?) with punched circlets around face, and down the legs and spine.
2501	Both Prominent, Pointed	Broken	N/A	Horns, Nose, Legs	Mythical, two-headed beast; one side depicts a humped bull, the other appears without a hump and judging by its drooping nose and forward-curving horns, may have been a sheep.
2600	Prominent, Pointed	Short, Set Apart	Short, Broken	Hump, Legs, Tail	Humped bull with elongated body and neck. Badly weathered.
2601	Broken	Long, Thin, Close	Long?, Thick, Broken	Hump, Legs, Tail	Torso and right, hind leg of quadruped; probably humpless cattle.
2602	Broken	Thin, Set Close, Broken	Broken	Legs	Torso of quadruped with broken legs.
2603	Broken	Set Close, Broken	Thick, Broken	Hump, Legs, Tail	Well modelled torso of quadruped, with hump broken off.

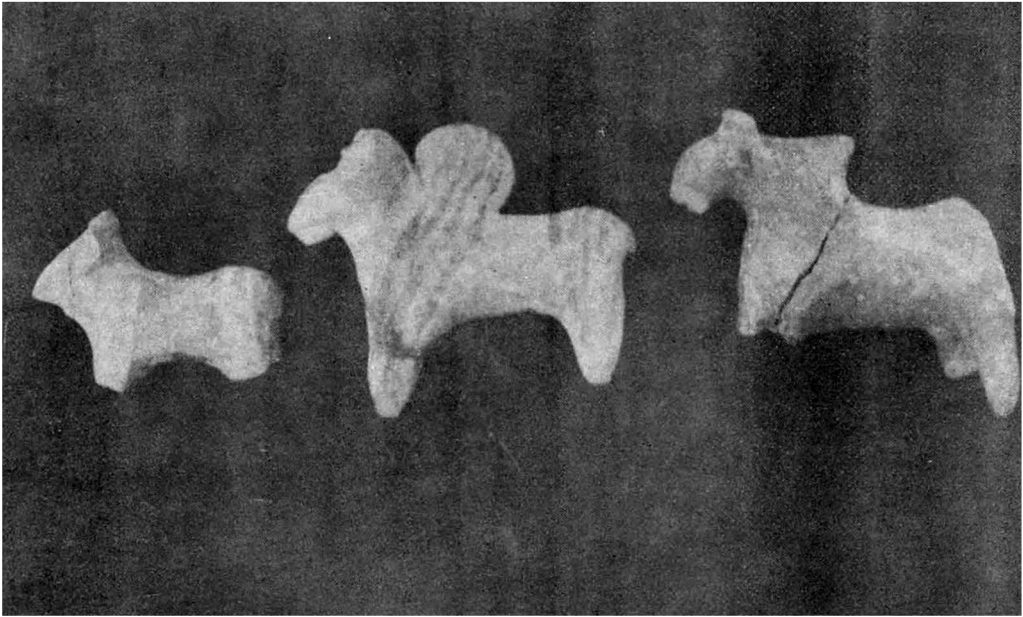
No	Trench	Square	Layer	Level	Length	Minheight	Maxheight	Width	Fabnc	Colour	Slip	Painting	Hom
2604	EII	17	0	0	0.0	0.0	0.0	2.4	Medium	Orange	-	-	Broken
2605	BIV	20	3	8	0.0	0.0	0.0	2.9	Coarse	Orange	-	-	Broken
2606	SURF	0	0	0	0.0	0.0	0.0	3.0	Medium	Orange	-	-	Broken
2607	BIV	4	14	14	6.0	0.0	3.2	2.0	Medium	Orange	Red	-	Broken
2608	CIII	21	1	4	0.0	0.0	0.0	3.0	Coarse	Orange	Red	-	Broken
2609	BIV	9	16	18	0.0	0.0	0.0	3.2	Fine	Orange	Dark Grey	Black	Broken
2610	BIV	9	14	16	0.0	0.0	0.0	2.6	Medium	Orange	Red	-	Broken
2611	BIV	20	2	7	0.0	4.3	0.0	2.7	Coarse	Orange	Red	Black	Broken
2612	BIV	5	1	1	0.0	4.5	0.0	2.7	Coarse	Orange	Red	-	Broken
2613	BIV	5	1	1	0.0	6.5	0.0	0.0	Coarse	Orange	Red And Cream	Black	Broken
2614	BIV	9	6	7	0.0	0.0	3.2	0.0	Medium	Orange	Red	Black	Broken
2615	D0	5	3	9	0.0	3.0	0.0	2.1	Fine	Orange	Red	Black	Broken
2616	BIV	19	1	5	0.0	5.5	0.0	3.0	Medium	Orange	Red	-	Broken
2617	BIV	4	7	7	0.0	0.0	0.0	3.2	Coarse	Orange	Red	-	Broken
2618	BIV	20	3	8	0.0	0.0	0.0	3.5	Medium	Orange	Red	-	Broken
2619	CIII	21	11	15	0.0	0.0	0.0	2.9	Fine	Orange	Red	-	Broken
2620	BIV	10	6	7	0.0	0.0	2.5	0.0	Medium	Orange	Red And Cream	Black	Broken
2621	BIV	4	1	1	0.0	0.0	0.0	0.0	Coarse	Buff	Red And Cream	Black	Broken
2622	EII	16	3	3	0.0	0.0	0.0	2.9	Fine	Orange	Red	-	Broken
2623	BIV	19	9	14	0.0	2.4	0.0	2.0	Medium	Orange	Red	-	Broken
2624	SURF	0	0	0	0.0	0.0	0.0	5.1	Fine	Buff	Red And Cream	Black	Broken
2625	SURF	0	0	0	0.0	7.9	0.0	3.7	Fine	Orange	-	-	Broken
2626	SURF	0	0	0	0.0	5.4	0.0	2.3	Fine	Buff	-	-	Broken
2627	CIV	21	5	16	9.0	0.0	0.0	3.2	Medium	Orange & Grey Core	Red	-	Broken
2628	FII	23	3	9	0.0	0.0	0.0	4.6	Coarse	Orange	Red	-	Broken
2629	FII V	22	14	15	0.0	0.0	0.0	3.5	Fine	Orange	-	-	Broken
2630	CIV	21	7	18	0.0	0.0	0.0	0.0	Coarse	Orange	-	-	Broken
2631	BIV	14	5	7	8.0	0.0	0.0	2.0	Medium	Orange	Brown	-	Broken
2632	F0	3	1	8	0.0	2.5	0.0	1.5	Fine	Orange	Red	-	Broken



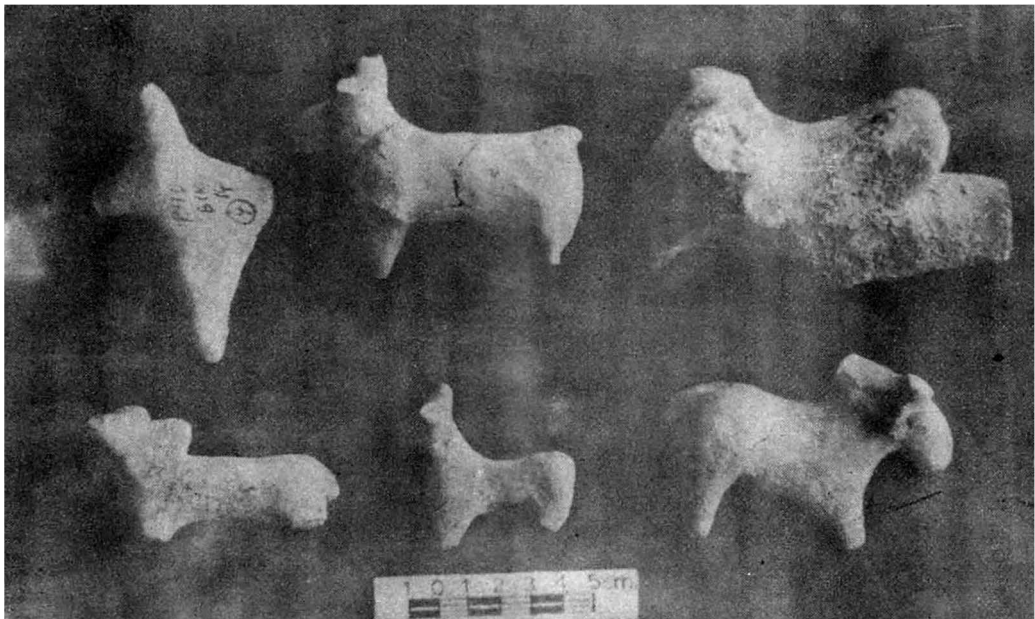
No	Nose	Legs	Tail	Applique	Description
2604	Broken	Thin, Set Close, Broken	Broken	Legs	Fragment of torso and (broken) forelegs of quadruped.
2605	Broken	Thin, Broken	Thick, Broken	Hump, Legs, Tail	Broken torso of quadruped with prominent hump and deep finger impression on the lower part of the right side.
2606	Broken	Thick, Set Close	Long, Thin	Hump, Legs, Tail	Legless torso of quadruped; striation marks along the flanks and on the hips suggest scraping. Finely modelled with a long, thin tail.
2607	Broken	Short, Set Apart	Broken	Legs	Headless, legless and tail-less torso of quadruped.
2608	Broken	Set Close, Broken	Thin, Broken	Hump, Legs, Tail	Left, hind quarter of thick-set humped bull. Only the scar of the hump is now visible.
2609	Broken	Thin, Set Apart, Broken	Thin, Broken	Legs, Tail	Torso and (broken) hind legs of quadruped. Traces of black painting visible. Body deformed due to overfiring.
2610	Broken	Long, Thin, Set Close	Thick, Short	Legs, Tail	Broken hind part of quadruped with flattened torso. Ends of legs and tail are also broken.
2611	Broken	Short, Curving, Set Close	Short, Thick	Legs, Tail	Rear left quarter of quadruped; traces of black lines visible.
2612	Broken	Medium, Conical, Set Close	Thick, Broken	Legs, Tail	Left, hind leg of quadruped.
2613	Broken	Short, Slightly Curving	Long, Thin	Legs, Tail	Right hind leg and tail of quadruped. Decoration consists of two oblique lines enclosing a cream slipped area with connecting zigzag line.
2614	Broken	Short, Pointed, Curving	Broken	Legs	Left, hind leg of quadruped, decorated with oblique black bands connected by a zigzag line, also in black.
2615	Broken	Short, Thick, Pinched	Thick, Short	Tail	Hind part of quadruped with traces of black lines on red slipped surface. Squat and heavy.
2616	Broken	Long, Conical, Set Apart	Short, Thick	Legs, Tail	Rear end of quadruped with only left hind leg surviving.
2617	Broken	Thick, Set Apart, Broken	Thick, Broken	Legs, Tail	Hind quarters of quadruped with broken legs.
2618	Broken	Set Apart, Broken	Long(?), Thin, Broken	Legs, Tail	Thick-set, well modelled hind part of quadruped with broken legs and tail.
2619	Broken	Long, Thick, Set Close	Broken	Legs, Tail	Hind portion of quadruped with broken legs.
2620	Broken	Short, Thick, Curving	Broken	Legs	Right hind leg of quadruped, decorated with thick, oblique bands of black, cream and red colour.
2621	Broken	Long, Slightly Curving	Broken	Legs	Left, hind leg of quadruped, decorated with intersecting black lines on a cream slipped surface, enclosed by parallel, oblique black lines.
2622	Broken	Short(?), Thick, Set Apart	Thin, Broken	Legs, Tail	Hind legs of quadruped.
2623	Broken	Short, Conical, Set Apart	Broken	Legs	Rear legs of quadruped, rest of the body has not survived.
2624	Broken	Long, Thick, Set Close	Thick, Broken	Legs, Tail	Torso and (broken) hind legs of a large, thick-set quadruped. Eye motifs in black and cream on a red slip cover most of the body. Longitudinal crack hints at original modelling of body in two parts.
2625	Broken	Long, Thin, Set Apart	Short, Triangular	Legs, Tail	Hind part of quadruped with slim torso and exceptionally long legs. Deep finger impression at point of juncture between legs and torso.
2626	Broken	Long, Thin, Set Close	Long, Thin	Legs, Tail	Hind part of quadruped with very long and thin legs and an equally slim and elongated torso.
2627	Broken	Long, Thin, Set Apart	Long, Thin	Legs, Tail	Elongated, flattened torso and legs in extended position. Rest of the body is broken. Overfired.
2628	Broken	Long, Curving, Set Apart	Thick, Broken	Legs, Tail	Torso and (broken) hind legs of quadruped.
2629	Broken	Thick, Set Apart, Broken	Broken	Legs, Tail	Hind part of quadruped with broken legs and tail.
2630	Broken	Long, Set Apart	Broken	Legs	Broken torso and two rear legs of quadruped. Impression of thin stick in middle.
2631	Broken	Short Stub - Pinched	Broken	-	Broken torso and (broken) forelegs of quadruped.
2632	Broken	Short, Thin, Set Close, Broken	Broken	Legs	Left, front leg of quadruped.

No	Trench	Square	Layer	Level	Length	Minheight	Maxheight	Width	Fabric	Colour	Slip	Painting	Horn
2633	E0	6	1	7	0.0	0.0	0.0	4.6	Coarse	Orange	Red And Cream	Black	Broken
2634	BIV	25	3	12	0.0	0.0	0.0	0.0	Coarse	Orange	Brown	Black	Broken
2635	BIV	20	0	0	0.0	0.0	0.0	0.0	Medium	Orange	Red	-	Broken
2636	BIV	9	10	11	0.0	0.0	0.0	0.0	Coarse	Orange	Red	-	Broken
2637	BIV	19	10	16	0.0	0.0	0.0	2.5	Medium	Orange	Red	Black	Broken
2638	BIV	9	12	14	0.0	0.0	0.0	0.0	Coarse	Orange	Red	-	Broken
2639	SURF	0	0	0	0.0	0.0	0.0	0.0	Medium	Orange	Red	-	N/A
2640	CIV	21	1	8	0.0	0.0	0.0	0.0	Medium	Orange	-	-	Broken
2641	BIV	4	2	2	0.0	0.0	0.0	0.0	Coarse	Orange	Brown	-	Broken
2642	BIV	9	5	6	0.0	0.0	0.0	0.0	Fine	Orange	Red	-	Broken
2643	BIV	9	6	7	0.0	0.0	7.5	0.0	Medium	Orange	-	-	Broken
2644	FIV	22	2	2	0.0	0.0	6.2	0.0	Coarse	Orange	Red	-	Broken
2645	FIV	22	1	1	0.0	0.0	5.8	0.0	Coarse	Orange	Red	-	Broken
2646	CIII	21	1	4	0.0	0.0	5.1	0.0	Coarse	Grey	Dark Grey	-	Broken
2647	BIV	14	6	8	0.0	0.0	4.8	0.0	Medium	Orange & Grey Core	-	-	Broken
2648	BIV	14	9	11	0.0	0.0	3.8	0.0	Medium	Orange	Red	-	Broken
2649	BIV	19	10	16	0.0	0.0	2.6	0.0	Fine	Orange	Red	-	Broken
2650	FIV	22	2	2	0.0	0.0	4.0	0.0	Coarse	Orange & Grey Core	Red	-	Broken
2651	SURF	0	0	0	0.0	0.0	4.4	0.0	Medium	Orange	Dark Red	Black	Broken
2652	BIV	4	18	18	4.5	0.0	0.0	0.0	Fine	Orange	Orange	-	Broken
2653	BIV	4	1	1	2.3	0.0	0.0	0.0	Fine	Orange	-	Brown	Broken
2654	HII	9	1	4	0.0	0.0	0.0	0.0	Fine	Orange	-	-	Broken
2655	HII	9	1	4	0.0	0.0	0.0	0.0	Fine	Orange	-	-	Broken
2701	BIV	20	12	20	0.0	0.0	0.0	0.0	Coarse	Red	-	-	Thick, Straight
2702	BIV	25	4	17	0.0	0.0	0.0	0.0	Coarse	Orange & Grey Core	-	-	Long, Thick, Curving Upwards
2703	EII	21	4	4	0.0	0.0	0.0	0.0	Coarse	Orange	-	-	Thick, Curving Upwards
2704	BIV	9	16	18	7.8	0.0	0.0	0.0	Coarse	Orange	Dark Red	Brown	Long, Slightly Curving
2705	BIV	19	3	7	3.3	0.0	0.0	0.0	Fine	Orange	-	-	Thin, Curving Upwards
2706	FIV	22	1	1	5.0	0.0	0.0	0.0	Fine	Orange	Red	-	Long, Thin, Curving
2707	FII	18	2	8	3.5	0.0	0.0	0.0	Coarse	Orange	-	-	Thick, Curving
2708	CIV	21	1	8	2.4	0.0	0.0	0.0	Medium	Orange	-	-	Thin, Curving Upwards
2709	BIV	15	5	7	4.0	0.0	0.0	0.0	Fine	Buff	-	-	Thick, Curving
2710	BIV	9	6	7	0.0	0.0	0.0	0.0	Fine	Orange	Dark Red-Brown	-	Long, Thin, Curving Upwards
2711	BIV	19	9	14	0.0	0.0	0.0	0.0	Coarse	Orange	-	-	Thin, Curving Upwards
2712	FII	18	2	8	0.0	0.0	0.0	0.0	Medium	Buff	-	-	Short, Thick, Hollow
2713	BIV	4	1	1	3.0	0.0	0.0	0.0	Fine	Orange	-	Brown	Thin, Curving Upwards

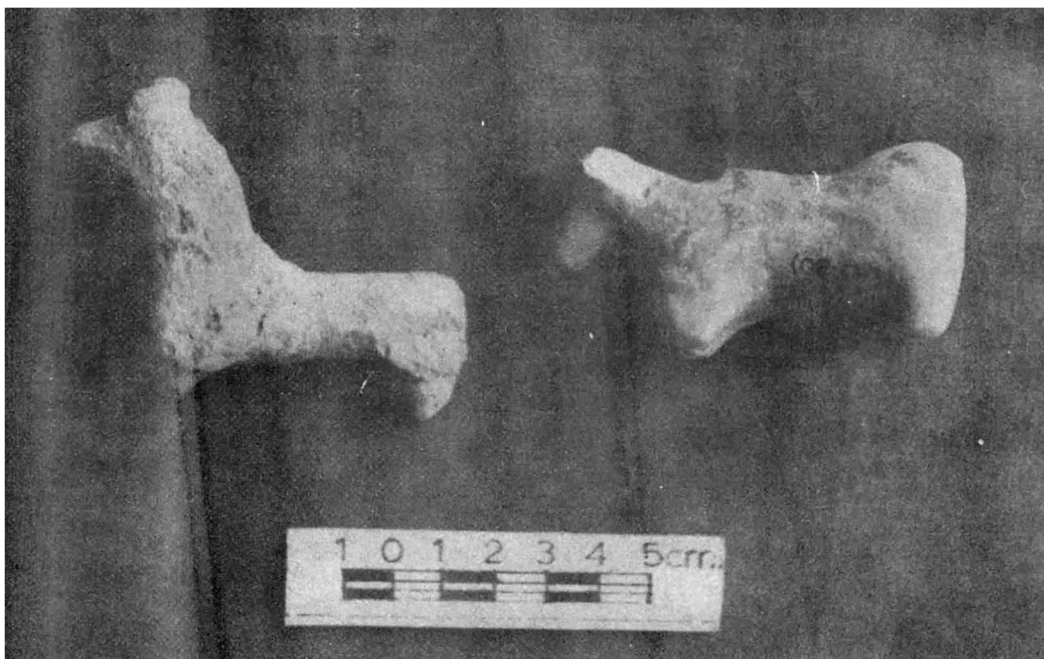
No	Nose	Legs	Tail	Applique	Description
2633	Broken	Thick, Set Apart, Broken	Broken	Legs	Lower forepart of quadruped; probably cattle. Sides of legs decorated in black with a ladder-like motif on cream slip. Red slip elsewhere.
2634	Broken	Broken	Broken	Legs	Left side of broken hind part of quadruped. Traces of black lines still visible on weathered surface.
2635	Broken	Short, Set Apart, Pinched	Broken	None(? - Legs Possibly Pinched)	Right, hind leg of quadruped.
2636	Broken	Long, Thick	Broken	Legs	Left, hind leg of quadruped.
2637	Broken	Long, Thin, Set Apart	Broken	Legs	Left, hind leg of quadruped. Traces of black oblique lines across it.
2638	Broken	Short, Thick	Broken	Legs, Tail	Rear left quarter of animal; mostly broken up.
2639	Prominent, Pointed, Broken	Broken	Broken	Nose	Broken forelegs and part of torso of unidentifiable quadruped.
2640	Broken	Short, Curving, Pinched	Broken	-	Right, hind leg and part of the torso of a quadruped.
2641	Prominent, Drooping	Broken	Broken	Nose, Hump	Finely modelled nose with incised nostrils, eyes and mouth. Species indeterminate, but may be ram (Figurine resembles a horse, but the context is much too early).
2642	Broken	Broken	Broken	-	Badly weathered and broken hind portion of animal. Overfired.
2643	Broken	Long, Thin, Curving	Broken	Legs	Leg of quadruped, of elongated conical shape.
2644	Broken	Long, Thin	Broken	Legs	Long, thin leg of quadruped with a thin layer of clay attached, which may have been used to connect the applique leg to the torso at the time of manufacture.
2645	Broken	Long, Thin, Curving	Broken	Legs	Leg of quadruped, elongated conical in shape.
2646	Broken	Elongated Conical	Broken	Legs	Broken leg of quadruped; overfired.
2647	Broken	Long, Thin	Broken	Legs	Broken leg of quadruped.
2648	Broken	Long, Conical	Broken	Legs	Leg of quadruped.
2649	Broken	Short, Conical	Broken	Legs	Small conical shaped leg
2650	Broken	Elongated Conical	Broken	Legs	Broken leg of quadruped.
2651	Broken	Short, Conical	Broken	Legs	Applique leg of quadruped with deep, double scar at point of attachment. Traces of black painting still visible.
2652	Broken	Short, Conical, Broken	Broken	Legs	Broken leg of quadruped
2653	Broken	Long And Thin	Broken	Legs	Broken leg of quadruped.
2654	Broken	Long And Thin	Broken	Legs	Broken leg of quadruped.
2655	Broken	Long And Thin	Broken	Legs	Broken leg of quadruped.
2701	Prominent, Cylindrical	Broken	Broken	Horns, Nose	Head and (broken) horns, probably of cattle.
2702	Prominent, Broken	Broken	Broken	Horns	Broken head and horns, probably of cattle.
2703	Prominent, Cylindrical	Broken	Broken	Horns, Nose	Head, horns and ears, probably of cattle.
2704	Broken	Broken	Broken	Horns	Long, slightly curving horn decorated with black lines and dots. Species hard to determine.
2705	Broken	Broken	Broken	Horns	Broken left horn of (probably) cattle.
2706	Broken	Broken	Broken	Horns	Finely modelled horn of (probably) cattle.
2707	Broken	Broken	Broken	Horns	Thick and hollow horn of (probably) cattle. Tip, which may have been applied separately, has broken off.
2708	Broken	Broken	Broken	Horns	Small, curving horn (right side), with pointed end. Probably of cattle.
2709	Broken	Broken	Broken	Horns	Thick, curving horn (of cattle?)
2710	Broken	Broken	Broken	Horns	Fragment of (left?) horn of (probably) cattle; decorated with a dark brown slip which has largely peeled away. Finely modelled
2711	Broken	Broken	Broken	Horns	Small, slightly curved and pointed horn
2712	Broken	Broken	Broken	Horns	Broken, hollow horn of bull.
2713	Broken	Broken	Broken	Horns	Small, curving horn of (probably) cattle. Unslipped, but the tip is painted in black.



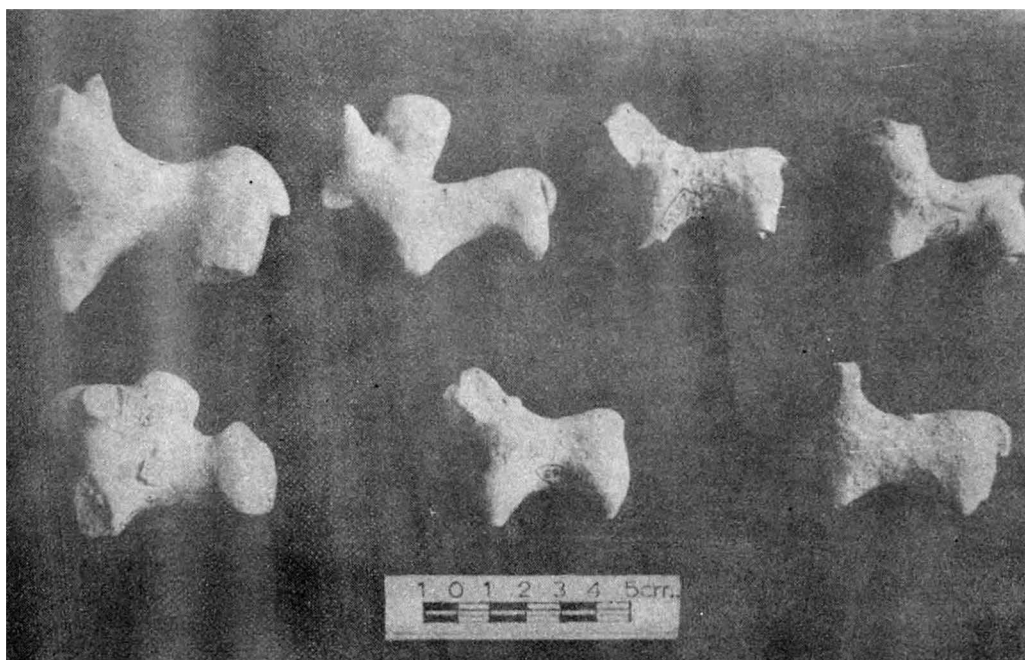
**1. Category I, Humped cattle.**



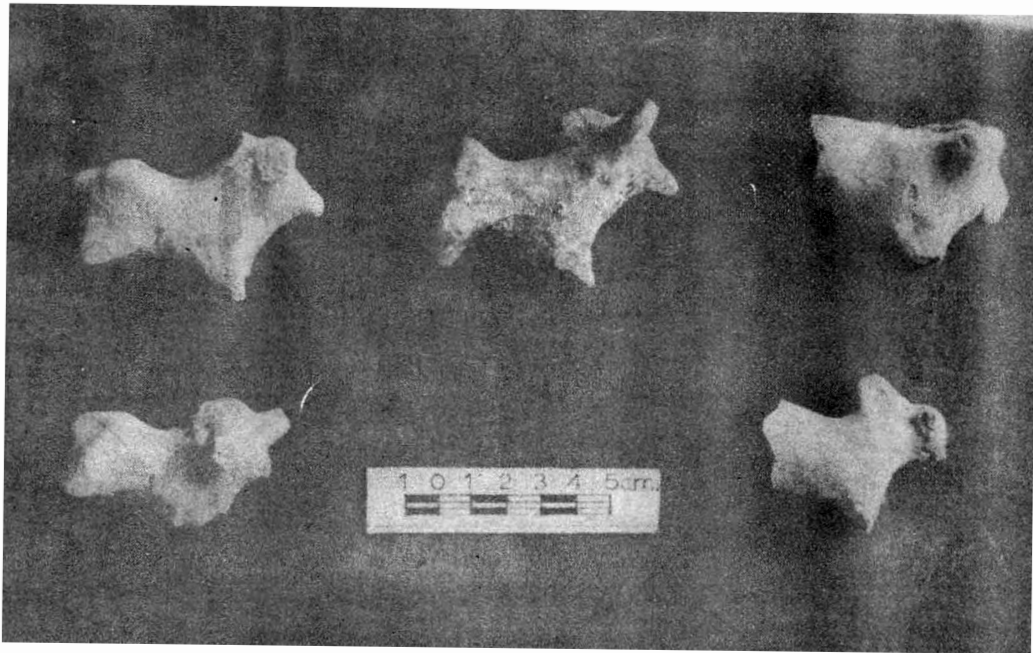
**2 Category I, Humped cattle.**



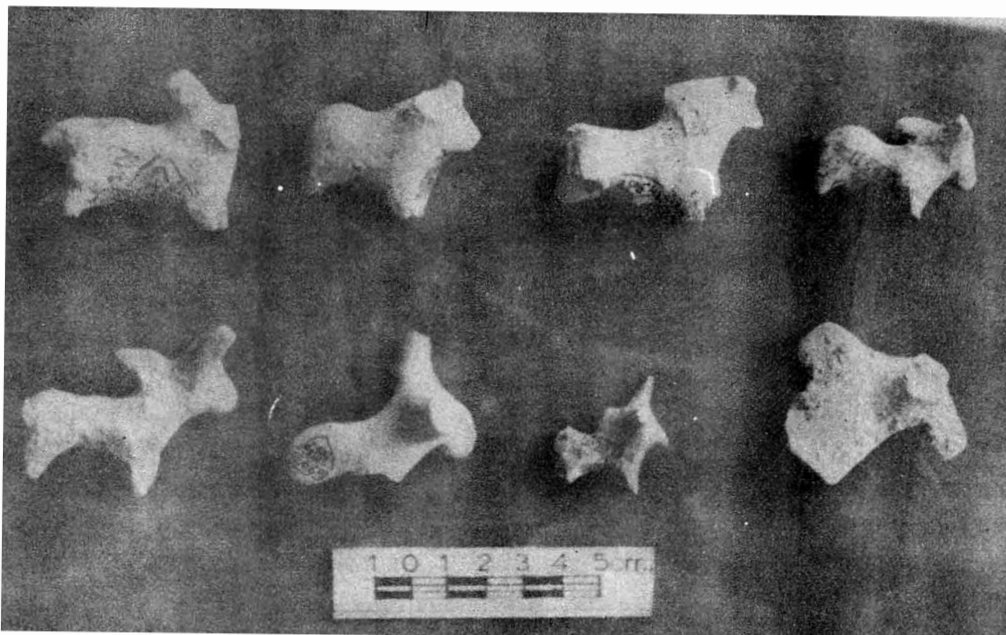
1. Category I, Humped cattle.



2. Category I, Humped cattle.

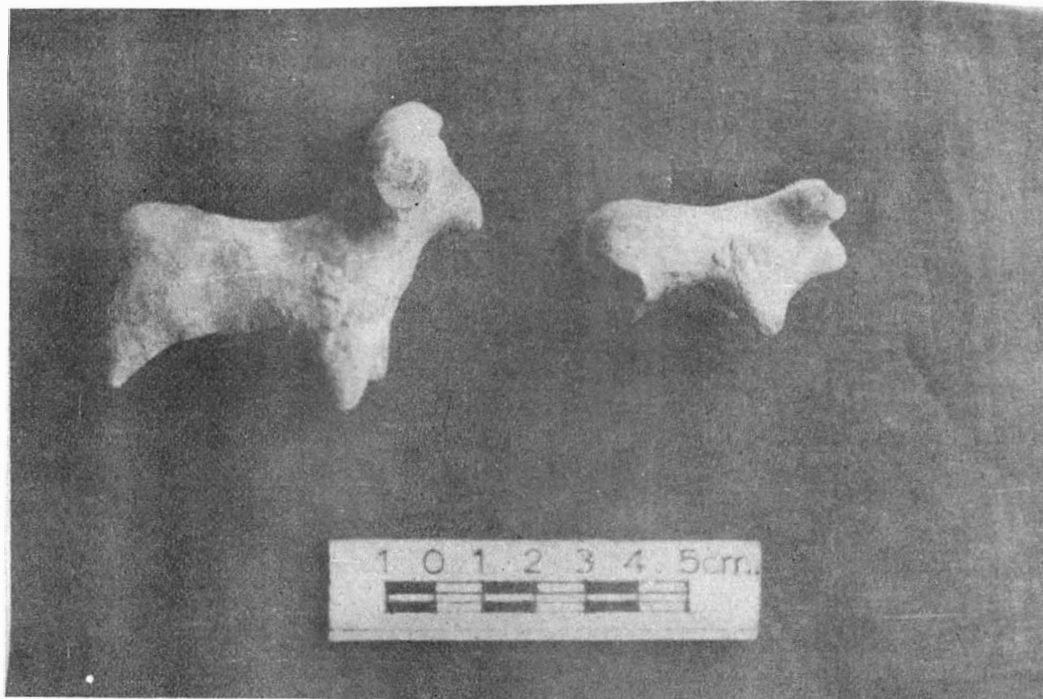


1. Category I, Humped cattle.



2. Category I, Humped cattle.

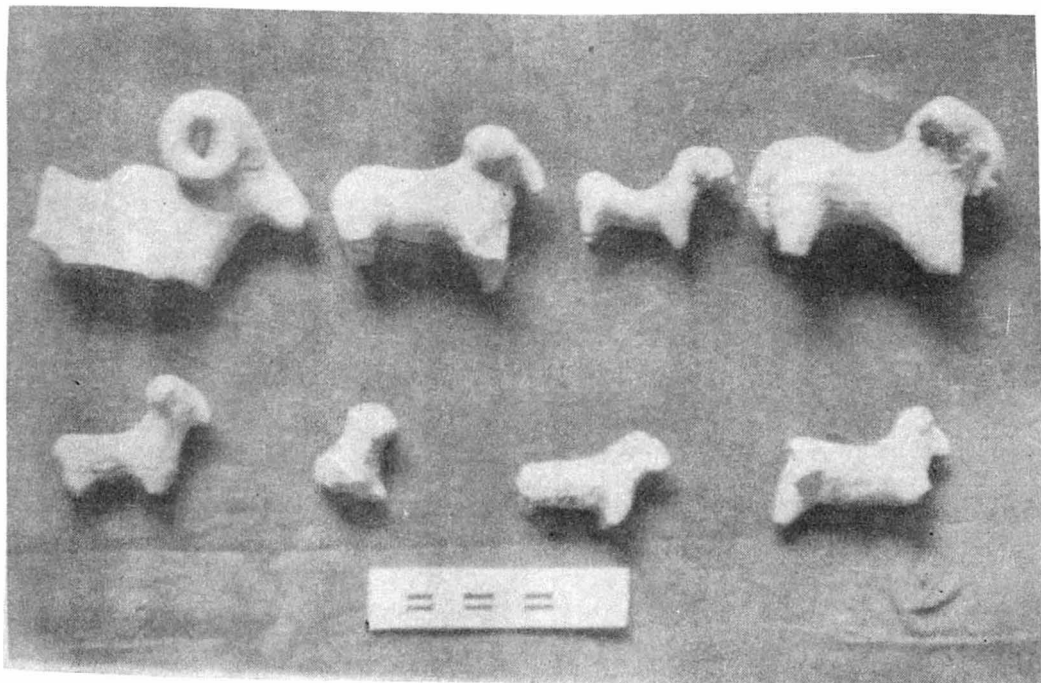




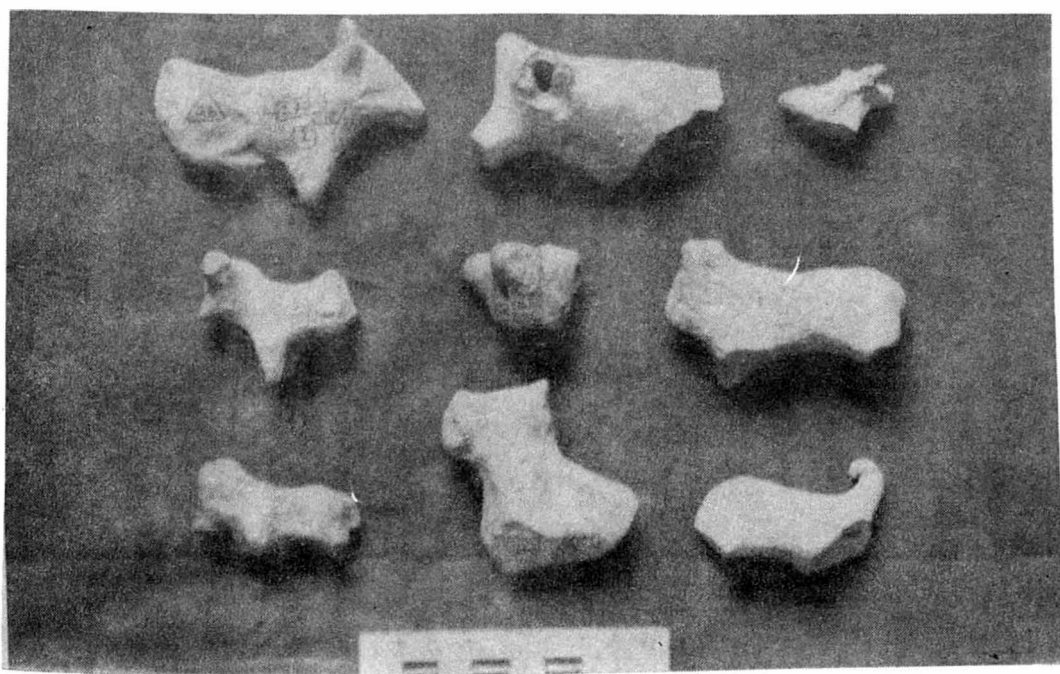
**1. Category 2, other cattle.**



**2. Category 2, other cattle.**

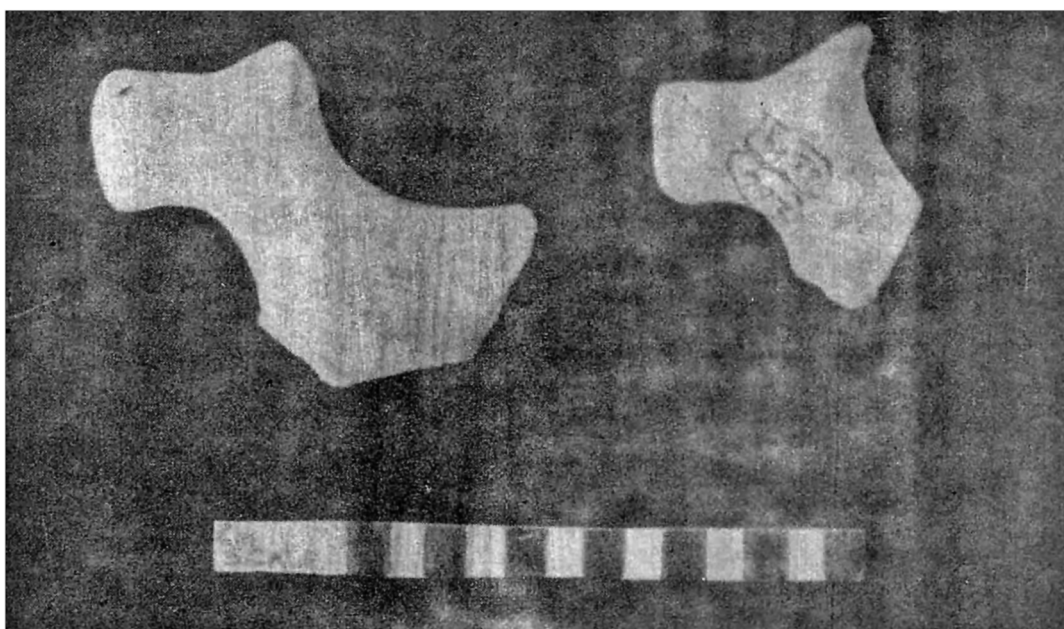


**1. Category 3, Sheep Figurines.**

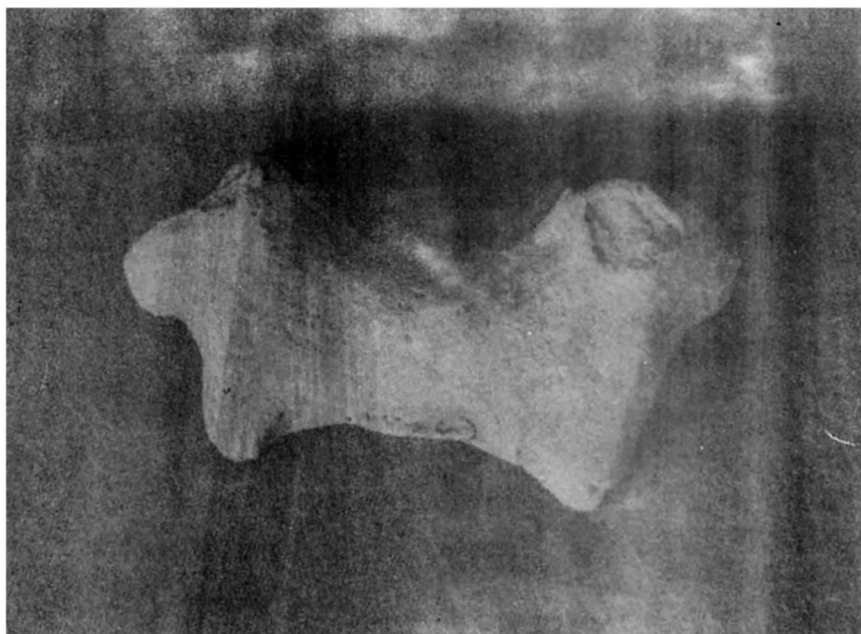


**2. Category 4, Dogs.**

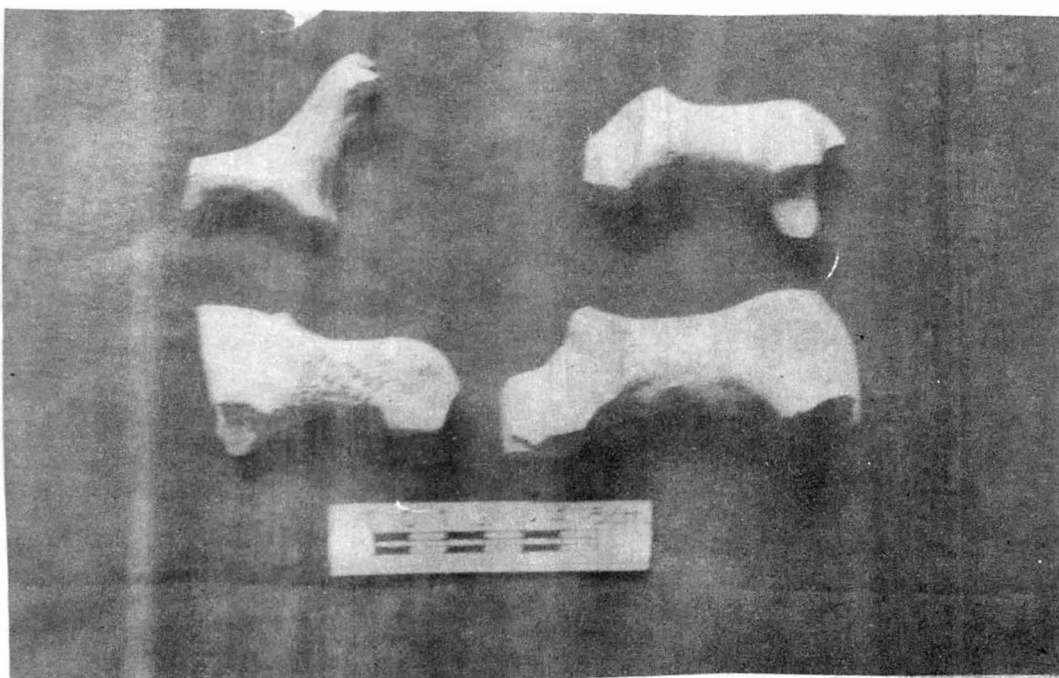




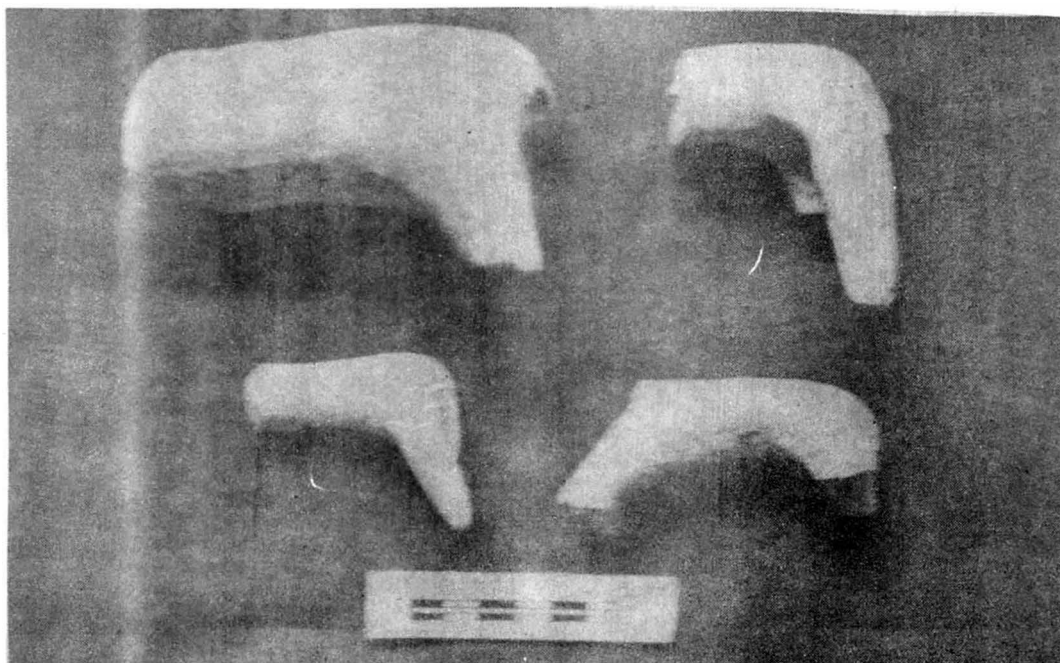
**1. Category 4, Dog Heads.**



**2. Category 6, Mythical**



1. Category 7, unidentified.



2. Category 7, unidentified.