

Miscellaneous Terracotta Objects

by F.A. Durrani, I. Ali and G. Erdosy

In addition to beads and figurines, numerous other terracotta objects were discovered at Rehman Dheri, and they will be described in turn. Although serving different purposes, their technological uniformity enables them to be lumped into one category. As regards the entries in the catalogue, they are either self-explanatory, or have already been discussed in the previous papers. It should be noted that all measurements are in millimetres.

Bangles

An enormous number of terracotta bangles were recovered from Rehman Dheri, in the layer-wise distribution (*shown in the table on next page*):

Layer	A/B/C	EII	FIV	Street	G/H	Total
1	31	52	78			161
2	232	84	159			475
3	164	68	126			358
4	218	30	151		26	425
5	244	19	53		17	333
6	268	11	3		5	287
7	605	5	16	184	5	815
8	2476		4	317	3	2800
9	166	3		228	1	398
10	421		1	193		615
11	117		14	19		150
12	117		5	20		142
13	8					8
14	53		7	26		86
15	24		22	5	2	51
16	69		8		2	79
17	22		1		2	25
18	14					16
19	6					6
20	2					2
Total	5257	272	648	992	63	7232

Only a handful of these were preserved complete, and these will be listed among the miscellaneous finds, below. In addition to the terracotta bangles, bangles of shell were also discovered. Technical studies of the manufacture of terracotta bangles offer some interesting possibilities, and are being planned for the future.

Miniature Pots

Miniature pots form a populous class, with 334 examples. With a few exceptions, as noted in the catalogue, they are handmade. In the majority of cases the clay is of medium to fine texture and orange in colour. Traces of a red slip survive on many stratified examples, but unlike full-sized vessels,

the miniature varieties are seldom painted, and then only with black bands, usually around the rim.

In spite of their small size and simple methods of manufacture the pots do fall into recognisable morphological categories, which usually have parallels in the corpus of full-size ceramics. This suggests that at least some of the ceramic types existed as well defined templates in the minds of craftsmen, who tried to reproduce them accurately even in the miniature form. The most frequent type is a convex sided bowl with a shallow rounded base, making up over 70% of the collection. It occurs throughout the sequence, and can be related to the numerous bowls, carinated as well as without carination, which are a prominent part of the Rehman Dheri ceramic assemblage. Other types occur in much smaller numbers. They include 9 ovoid jars in typical 'Kot Dijian' style, with even the shallow grooves, and painted rims represented. They are found in *levels* 8-15, which corresponds well to the period of peak popularity of the parent form.

Basins with straight sides and flat bases (15 examples), shallow plates (18), bowls with a shallow pedestal base (6), lids (2), perforated vessels, dishes on stand and globular jars are also easily recognisable. The only type which occurs frequently (with 25 examples) without any parallels in the full-sized corpus is a beaker-shaped vessel, often with a flaring mouth. It may be interpreted - on the basis of modern analogies - as a dice thrower. Although no dice were found in Rehman Dheri, they have been reported from elsewhere, attesting to the popularity of the game even in prehistoric times. The beaker-shaped throwers may be placed between levels 9-20 in the overall sequence; what caused their disappearance in Period III of Rehman Dheri is not known. They are, along with a few individual examples of other types, the most attractive of all the miniature pots found in the excavations.

Bird Figurines and Bird Whistles

Although logically belonging to the category of animal figurines, the bird figurines are sufficiently distinct to merit separate treatment. A total of 108 examples were found and they fall into two discrete types - solid figurines

and hollow whistles - along with a solitary rattle in the shape of a duck. Figurines are usually flat with prominent tails, while whistles are broad and devoid of tails; both types have long necks and stylised heads with prominent beaks. Both types also rest on a stand with either flat or shallow pedestal bases and a solid cylindrical stem; prominent scars on the undersides of the bodies of both figurines and whistles show that the stand was applied separately. Although the bird figurines are generally unslipped, the tails are occasionally painted with black linear and wavy lines, perhaps in imitation of the spines of feathers. This type of object occurs throughout the Rehman Dheri sequence, and has good parallels elsewhere in the Greater Indus Valley.

Terracotta Wheels

58 wheels were found either in excavations, or on the surface. They are, for the most part, made of medium to coarse clay. Prominent finger impressions and signs of scraping on some examples suggest the principal means of shaping. Decoration consists of a red slip, and the spokes of the wheels are occasionally rendered in black paint. All examples are perforated in the centre.

It may be noted that the number of wheels is totally out of proportion to the number of cart-frames, only 3 broken fragments of which have been found. Otherwise, the wheels call for no special comment, although it should be noted that two of them have been incised with a 'proto-Indus' sign, rare examples of the latter at Rehman Dheri which were found on objects other than ceramics.

Miscellaneous Objects

A few objects which do not fall into any of the above categories may be listed here, along with completely surviving examples of terracotta bangles, to which reference has already been made. They are, for the most part self explanatory, consisting principally of sling-balls, of which 22 were found in a

single layer alone. Cart frames, popular throughout the Greater Indus Valley, as well as a few (occasionally unidentifiable) odds and ends make up the rest.

■ *Miniature Pots of Rehman Dheri* ■

Trench	Square	Layer	Level	Colour	Slip	Painting	Height	Diam	Comments
SURF	0	0	0	Orange	-	-	20	43	Basin - crudely modelled with incurving walls.
BIV	14	1	2	Orange	-	-	20	47	Basin with straight sides and flat base.
BIV	9	2	3	Orange	-	-	22	59	Crude basin with straight sides and flat base.
FñV	16	3	3	Orange	RED	BLACK	25	93	Basin with straight sides and flat base Black paint on rim.
FñV	22	4	4	Orange	-	-	40	75	Basin with straight sides and flat base.
BIV	14	4	6	Orange	-	-	26	79	Basin with straight sides and flat base.
BIV	9	7	8	Orange	RED	-	17	55	Basin with straight sides and flat base.
BIV	19	5	9	Orange	RED	BLACK	32	80	Basin with straight sides and flat base.
CIII	21	6	9	Orange	-	-	23	71	Basin with straight sides and flat base.
BIV	9	9	10	Orange	-	-	22	86	Basin with straight sides and flat base Wheelmade.
FñI	23	4	10	Orange	-	-	19	43	Basin with straight sides and flat base.
BIV	9	9	10	Orange	-	-	15	72	Basin with straight sides and flat base.
CIII	21	7	10	Orange	RED	BLACK	32	84	Basin with straight sides and flat base.
BIV	14	12	15	Orange	RED	BLACK	24	81	Basin with straight sides and flat base Black paint on rim.
BIV	19	12	18	Orange	-	-	15	40	Basin with straight sides and flat base.
BIV	4	0	0	Orange	RED	BLACK	39	30	Beaker-shaped dice-thrower.
SURF	0	0	0	Orange	-	-	30	25	Beaker-shaped dice-thrower.
SURF	0	0	0	Orange	-	-	35	37	Beaker-shaped dice-thrower.
SURF	0	0	0	Orange	RED	BLACK	39	32	Beaker-shaped dice-thrower.
SURF	0	0	0	Orange	RED	BLACK	41	35	Beaker-shaped dice-thrower.
SURF	0	0	0	Orange	-	-	48	32	Beaker-shaped dice-thrower.
FñV	17	1	1	Orange	-	-	40	35	Beaker-shaped dice-thrower.
BIV	20	3	8	Orange	-	-	34	31	Beaker-shaped dice-thrower Prominent flaring mouth.
BIV	23	3	9	Orange	RED	BLACK	31	29	Beaker-shaped dice-thrower.
BIV	19	6	10	Orange	-	-	38	39	Beaker-shaped dice-thrower.
CIV	21	2	10	Orange	-	-	28	19	Beaker-shaped dice-thrower.
BIV	20	6	11	Orange	-	-	40	23	Beaker-shaped dice-thrower.
BIV	19	7	11	Orange	RED	BLACK	27	24	Beaker-shaped dice-thrower.
BIV	25	3	12	Orange	RED	-	40	39	Beaker-shaped dice-thrower.
BIV	25	3	12	Orange	RED	BLACK	52	36	Beaker-shaped dice-thrower.
CIV	21	5	16	Orange	RED	BLACK	52	34	Beaker-shaped dice-thrower.
FñV	17	15	16	Grey	-	-	44	31	Beaker-shaped dice-thrower.
BIV	19	11	17	Orange	RED	BLACK	44	33	Beaker-shaped dice-thrower.
BIV	19	12	18	Orange	RED	BLACK	36	32	Beaker-shaped dice-thrower.
BIV	19	12	18	Orange	RED	-	40	29	Beaker-shaped dice-thrower.
BIV	24	6	18	Orange	RED	BLACK	41	32	Beaker-shaped dice-thrower.
BIV	24	6	18	Orange	RED	BLACK	42	29	Beaker-shaped dice-thrower.
BIV	24	6	18	Orange	RED	BLACK	44	30	Beaker-shaped dice-thrower.
BIV	25	5	18	Orange	RED	BLACK	45	32	Beaker-shaped dice-thrower.
BIV	19	14	20	Orange	RED	BLACK	40	35	Beaker-shaped dice-thrower.
SURF	0	0	0	Orange	-	-	44	0	Convex-sided bowl with pedestal base.
EII	21	2	2	Orange	-	-	30	0	Convex-sided bowl with pedestal base.
BIV	14	5	7	Orange	-	-	16	38	Convex-sided bowl with pedestal base.
CIV	21	1	8	Orange	RED	BLACK	34	43	Convex-sided bowl with pedestal base.
BIV	25	3	12	Orange	RED	BLACK	61	82	Convex-sided bowl with pedestal base Wheelmade.
BIV	25	7	20	Orange	RED	-	31	49	Convex-sided bowl with pedestal base.
AIV	4	0	0	Orange	RED	-	15	21	Convex-sided bowl.
AIV	4	0	0	Orange	-	-	18	28	Convex-sided bowl.
BIV	10	0	0	Orange	-	-	11	20	Convex-sided bowl.
BIV	4	0	0	Orange	-	-	11	22	Convex-sided bowl.

Trench	Square	Layer	Level	Colour	Slip	Painting	Height	Diam	Comments
BIV	19	0	0	Orange	-	-	11	23	Convex-sided bowl
BIV	4	0	0	Orange	-	-	12	24	Convex-sided bowl
BIV	5	0	0	Orange	RED	BLACK	15	21	Convex-sided bowl
BIV	19	0	0	Orange	-	-	15	22	Convex-sided bowl
BIV	25	0	0	Grey	-	-	15	26	Convex-sided bowl
BIV	9	0	0	Orange	-	-	17	24	Convex-sided bowl
BIV	9	0	0	Grey	-	-	19	27	Convex-sided bowl
BV	4	0	0	Orange	-	-	8	22	Convex-sided bowl
BV	14	0	0	Orange	-	-	10	21	Convex-sided bowl
BV	14	0	0	Orange	RED	-	14	20	Convex-sided bowl
EII	21	0	0	Orange	-	-	10	26	Convex-sided bowl
F0	9	0	0	Orange	-	-	3	23	Convex-sided bowl
F0	4	0	0	Grey	-	-	9	21	Convex-sided bowl
F0	3	0	0	Orange	RED	-	12	19	Convex-sided bowl
F0	9	0	0	Orange	-	-	16	25	Convex-sided bowl
FfIV	16	0	0	Orange	-	-	7	17	Convex-sided bowl
FfIV	16	0	0	Orange	-	-	11	20	Convex-sided bowl
SURF	0	0	0	Grey	GREY	-	5	9	Convex-sided bowl
SURF	0	0	0	Orange	-	-	7	16	Convex-sided bowl
SURF	0	0	0	Orange	GREY	-	7	17	Convex-sided bowl
SURF	0	0	0	Orange	-	-	7	19	Convex-sided bowl
SURF	0	0	0	Orange	RED	BLACK	8	9	Convex-sided bowl
SURF	0	0	0	Orange	GREY	-	8	13	Convex-sided bowl
SURF	0	0	0	Orange	RED	-	8	14	Convex-sided bowl
SURF	0	0	0	Orange	-	-	8	14	Convex-sided bowl
SURF	0	0	0	Orange	-	-	8	16	Convex-sided bowl
SURF	0	0	0	Orange	-	-	8	18	Convex-sided bowl
SURF	0	0	0	Grey	-	-	8	19	Convex-sided bowl
SURF	0	0	0	Orange	RED	-	8	19	Convex-sided bowl
SURF	0	0	0	Grey	-	-	8	19	Convex-sided bowl
SURF	0	0	0	Orange	-	-	8	19	Convex-sided bowl
SURF	0	0	0	Orange	-	-	8	21	Convex-sided bowl
SURF	0	0	0	Grey	GREY	-	8	23	Convex-sided bowl
SURF	0	0	0	Orange	-	-	8	24	Convex-sided bowl
SURF	0	0	0	Orange	-	-	9	8	Convex-sided bowl
SURF	0	0	0	Orange	RED	-	9	16	Convex-sided bowl
SURF	0	0	0	Orange	-	-	9	17	Convex-sided bowl
SURF	0	0	0	Orange	-	-	9	17	Convex-sided bowl
SURF	0	0	0	Grey	-	-	9	19	Convex-sided bowl
SURF	0	0	0	Orange	-	-	9	19	Convex-sided bowl
SURF	0	0	0	Grey	RED	BLACK	9	19	Convex-sided bowl
SURF	0	0	0	Orange	-	-	9	19	Convex-sided bowl
SURF	0	0	0	Orange	-	-	9	19	Convex-sided bowl
SURF	0	0	0	Orange	-	-	9	20	Convex-sided bowl
SURF	0	0	0	Orange	-	-	9	21	Convex-sided bowl
SURF	0	0	0	Orange	-	-	9	22	Convex-sided bowl
SURF	0	0	0	Orange	-	BLACK	9	23	Convex-sided bowl
SURF	0	0	0	Orange	RED	-	9	24	Convex-sided bowl
SURF	0	0	0	Orange	RED	-	10	16	Convex-sided bowl
SURF	0	0	0	Orange	-	-	10	17	Convex-sided bowl

■ *Miniature Pots of Rehman Dheri* ■

Trench	Square	Layer	Level	Colour	Slip	Painting	Height	Diam	Comments
SURF	0	0	0	Orange	-	-	10	17	Convex-sided bowl.
SURF	0	0	0	Orange	-	-	10	19	Convex-sided bowl
SURF	0	0	0	Orange	-	-	10	20	Convex-sided bowl
SURF	0	0	0	Orange	RED	-	10	20	Convex-sided bowl
SURF	0	0	0	Orange	-	-	10	21	Convex-sided bowl
SURF	0	0	0	Orange	-	-	10	22	Convex-sided bowl
SURF	0	0	0	Orange	-	-	10	22	Convex-sided bowl.
SURF	0	0	0	Orange	-	-	10	26	Convex-sided bowl.
SURF	0	0	0	Orange	-	-	11	17	Convex-sided bowl.
SURF	0	0	0	Orange	-	-	11	21	Convex-sided bowl
SURF	0	0	0	Orange	-	-	11	21	Convex-sided bowl
SURF	0	0	0	Orange	RED	BLACK	11	23	Convex-sided bowl.
SURF	0	0	0	Orange	-	-	11	23	Convex-sided bowl.
SURF	0	0	0	Orange	-	-	11	24	Convex-sided bowl.
SURF	0	0	0	Grey	-	-	12	20	Convex-sided bowl.
SURF	0	0	0	Orange	-	-	12	21	Convex-sided bowl
SURF	0	0	0	Orange	RED	BLACK	12	22	Convex-sided bowl
SURF	0	0	0	Orange	-	-	12	22	Convex-sided bowl
SURF	0	0	0	Orange	-	-	12	22	Convex-sided bowl
SURF	0	0	0	Orange	-	-	12	23	Convex-sided bowl.
SURF	0	0	0	Orange	RED	BLACK	12	24	Convex-sided bowl.
SURF	0	0	0	Orange	RED	-	13	18	Convex-sided bowl
SURF	0	0	0	Orange	-	-	13	18	Convex-sided bowl.
SURF	0	0	0	Orange	-	-	13	19	Convex-sided bowl.
SURF	0	0	0	Orange	-	-	13	21	Convex-sided bowl.
SURF	0	0	0	Orange	-	-	13	28	Convex-sided bowl
SURF	0	0	0	Orange	RED	BLACK	14	22	Convex-sided bowl
SURF	0	0	0	Orange	-	-	14	22	Convex-sided bowl
SURF	0	0	0	Grey	-	-	14	23	Convex-sided bowl
SURF	0	0	0	Orange	-	-	14	26	Convex-sided bowl
SURF	0	0	0	Orange	-	-	14	26	Convex-sided bowl.
SURF	0	0	0	Orange	-	-	14	26	Convex-sided bowl
SURF	0	0	0	Orange	-	-	14	27	Convex-sided bowl
SURF	0	0	0	Orange	RED	-	15	21	Convex-sided bowl
SURF	0	0	0	Orange	-	-	15	22	Convex-sided bowl.
SURF	0	0	0	Orange	-	-	15	25	Convex-sided bowl.
SURF	0	0	0	Orange	-	-	15	27	Convex-sided bowl.
SURF	0	0	0	Grey	-	-	16	23	Convex-sided bowl.
SURF	0	0	0	Orange	RED	BLACK	16	23	Convex-sided bowl.
SURF	0	0	0	Orange	-	-	16	23	Convex-sided bowl.
SURF	0	0	0	Orange	-	-	16	23	Convex-sided bowl.
SURF	0	0	0	Orange	RED	-	16	24	Convex-sided bowl.
SURF	0	0	0	Orange	RED	-	16	25	Convex-sided bowl
SURF	0	0	0	Orange	RED	BLACK	16	25	Convex-sided bowl
SURF	0	0	0	Orange	RED	-	16	27	Convex-sided bowl.
SURF	0	0	0	Orange	RED	-	17	20	Convex-sided bowl.
SURF	0	0	0	Orange	RED	-	17	23	Convex-sided bowl
SURF	0	0	0	Orange	-	-	17	24	Convex-sided bowl
SURF	0	0	0	Orange	-	-	17	27	Convex-sided bowl.
SURF	0	0	0	Orange	RED	-	18	21	Convex-sided bowl.

Trench	Square	Layer	Level	Colour	Slip	Painting	Height	Diam	Comments
SURF	0	0	0	Orange	RED	-	18	25	Convex-sided bowl.
SURF	0	0	0	Orange	RED	-	18	26	Convex-sided bowl.
SURF	0	0	0	Grey	-	-	18	28	Convex-sided bowl.
SURF	0	0	0	Orange	RED	-	19	9	Convex-sided bowl.
SURF	0	0	0	Grey	-	-	19	21	Convex-sided bowl.
SURF	0	0	0	Orange	-	-	19	26	Convex-sided bowl.
SURF	0	0	0	Orange	-	-	19	31	Convex-sided bowl.
SURF	0	0	0	Orange	RED	-	20	25	Convex-sided bowl.
SURF	0	0	0	Orange	-	-	20	26	Convex-sided bowl.
SURF	0	0	0	Orange	-	-	21	24	Convex-sided bowl.
SURF	0	0	0	Orange	RED	-	21	29	Convex-sided bowl.
SURF	0	0	0	Orange	-	-	21	31	Convex-sided bowl.
SURF	0	0	0	Orange	-	-	22	30	Convex-sided bowl.
SURF	0	0	0	Orange	-	-	24	23	Convex-sided bowl.
SURF	0	0	0	Orange	-	-	24	33	Convex-sided bowl.
SURF	0	0	0	Grey	-	-	26	20	Convex-sided bowl.
SURF	0	0	0	Orange	-	-	28	28	Convex-sided bowl.
FflV	22	1	1	Orange	-	-	7	23	Convex-sided bowl.
FflV	17	1	1	Orange	RED	-	12	20	Convex-sided bowl.
BIV	10	1	2	Grey	-	-	12	21	Convex-sided bowl.
BIV	9	1	2	Orange	-	-	12	22	Convex-sided bowl.
BIV	9	1	2	Orange	-	-	13	24	Convex-sided bowl.
BIV	9	1	2	Grey	-	-	14	23	Convex-sided bowl.
BIV	10	1	2	Orange	RED	BLACK	15	26	Convex-sided bowl.
FflV	17	2	2	Orange	-	-	8	20	Convex-sided bowl.
FflV	16	2	2	Orange	-	-	11	20	Convex-sided bowl.
FflV	17	2	2	Orange	-	-	13	20	Convex-sided bowl.
BIV	20	1	3	Orange	-	-	8	17	Convex-sided bowl.
BIV	20	1	3	Orange	-	-	11	22	Convex-sided bowl.
FflV	17	3	3	Orange	RED	-	17	26	Convex-sided bowl.
BIV	4	4	4	Orange	-	-	15	25	Convex-sided bowl.
CIII	21	1	4	Grey	-	-	7	16	Convex-sided bowl.
CIII	21	1	4	Orange	-	-	15	21	Convex-sided bowl.
EII	16	4	4	Orange	-	-	16	23	Convex-sided bowl.
EII	16	4	4	Grey	-	-	16	23	Convex-sided bowl.
FflV	16	4	4	Orange	-	-	10	21	Convex-sided bowl.
FflV	16	4	4	Orange	-	-	14	24	Convex-sided bowl.
BIV	15	3	5	Orange	RED	BLACK	15	27	Convex-sided bowl.
CIII	21	2	5	Grey	-	-	11	20	Convex-sided bowl.
CIII	21	2	5	Orange	RED	-	14	21	Convex-sided bowl.
FflV	21	5	5	Orange	-	-	9	20	Convex-sided bowl.
FflV	22	5	5	Orange	-	-	21	20	Convex-sided bowl.
HII	9	2	5	Grey	-	-	10	24	Convex-sided bowl.
BIV	19	2	6	Orange	RED	-	14	20	Convex-sided bowl.
BIV	19	2	6	Orange	RED	-	18	26	Convex-sided bowl.
BIV	9	6	7	Orange	-	-	9	17	Convex-sided bowl.
BIV	23	1	7	Orange	-	-	12	23	Convex-sided bowl.
BIV	20	2	7	Grey	-	-	13	21	Convex-sided bowl.
BIV	10	6	7	Orange	-	-	14	26	Convex-sided bowl.
BIV	20	2	7	Orange	-	-	14	30	Convex-sided bowl.

Trench	Square	Layer	Level	Colour	Slip	Painting	Height	Diam	Comments
BIV	9	6	7	Orange	RED	-	15	24	Convex-sided bowl.
BIV	9	6	7	Orange	RED	-	17	24	Convex-sided bowl.
BIV	14	5	7	Orange	-	-	17	24	Convex-sided bowl.
BIV	23	1	7	Orange	RED	BLACK	17	25	Convex-sided bowl.
BIV	23	1	7	Orange	-	-	18	17	Convex-sided bowl.
BIV	23	1	7	Orange	RED	-	18	26	Convex-sided bowl.
D0	5	1	7	Orange	-	-	17	25	Convex-sided bowl.
Dd	24	1	7	Orange	-	-	13	21	Convex-sided bowl.
FIV	16	7	7	Orange	-	-	13	20	Convex-sided bowl.
AIV	4	1	8	Grey	-	-	9	16	Convex-sided bowl.
AIV	4	1	8	Orange	-	-	10	18	Convex-sided bowl.
AIV	4	1	8	Grey	-	-	11	27	Convex-sided bowl.
AIV	4	1	8	Grey	-	-	14	27	Convex-sided bowl.
BIV	24	1	8	Grey	-	-	10	18	Convex-sided bowl.
BIV	24	1	8	Grey	-	-	12	29	Convex-sided bowl.
BIV	4	8	8	Orange	-	-	13	25	Convex-sided bowl.
BIV	9	7	8	Orange	-	-	14	21	Convex-sided bowl.
BIV	4	8	8	Orange	-	-	15	25	Convex-sided bowl.
BIV	25	1	8	Grey	-	-	15	26	Convex-sided bowl.
BIV	24	1	8	Orange	RED	-	16	28	Convex-sided bowl.
BIV	4	8	8	Orange	-	-	17	29	Convex-sided bowl.
F0	4	1	8	Grey	-	-	11	24	Convex-sided bowl.
F0	8	1	8	Grey	-	-	17	23	Convex-sided bowl.
F0	3	1	8	Grey	-	-	18	17	Convex-sided bowl.
Ffl	23	2	8	Grey	-	-	13	18	Convex-sided bowl.
Ffl	18	2	8	Grey	-	-	16	24	Convex-sided bowl.
Ffl	18	2	8	Grey	-	-	16	25	Convex-sided bowl.
Ffl	18	2	8	Grey	-	-	17	16	Convex-sided bowl.
Ffl	18	2	8	Orange	-	-	21	21	Convex-sided bowl.
Ffl	18	1	8	Orange	-	-	25	30	Convex-sided bowl.
FIV	17	8	8	Orange	RED	BLACK	22	23	Convex-sided bowl.
BIV	20	4	9	Orange	-	-	9	21	Convex-sided bowl.
BIV	19	5	9	Orange	-	-	12	24	Convex-sided bowl.
CIII	21	6	9	Orange	-	-	14	27	Convex-sided bowl.
D0	5	3	9	Orange	RED	-	18	25	Convex-sided bowl.
DdI	24	3	9	Grey	-	-	15	24	Convex-sided bowl.
DdI	24	3	9	Orange	-	-	9	17	Convex-sided bowl.
F0	3	2	9	Orange	RED	-	7	21	Convex-sided bowl.
F0	23	1	9	Grey	-	-	10	11	Convex-sided bowl.
F0	13	2	9	Orange	-	-	10	19	Convex-sided bowl.
F0	8	2	9	Orange	-	-	10	19	Convex-sided bowl.
F0	23	1	9	Orange	-	-	10	21	Convex-sided bowl.
F0	23	1	9	Orange	-	-	11	23	Convex-sided bowl.
F0	8	2	9	Orange	-	-	11	28	Convex-sided bowl.
F0	23	1	9	Orange	-	-	12	21	Convex-sided bowl.
F0	3	2	9	Orange	RED	BLACK	12	22	Convex-sided bowl.
F0	23	1	9	Orange	-	-	13	24	Convex-sided bowl.
F0	23	1	9	Orange	-	-	14	11	Convex-sided bowl.
F0	3	2	9	Orange	-	-	15	22	Convex-sided bowl.
F0	8	2	9	Orange	-	-	15	28	Convex-sided bowl.

■ *Miniature Pots of Rehman Dheri* ■

Trench	Square	Layer	Level	Colour	Slip	Painting	Height	Diam	Comments
F0	8	2	9	Orange	-	-	18	39	Convex-sided bowl.
BIV	9	9	10	Orange	-	-	11	19	Convex-sided bowl.
BIV	19	6	10	Orange	-	-	12	24	Convex-sided bowl.
BIV	9	9	10	Orange	RED	-	14	20	Convex-sided bowl.
BIV	20	5	10	Orange	RED	-	14	22	Convex-sided bowl.
BIV	25	2	10	Orange	-	-	14	23	Convex-sided bowl.
BIV	24	2	10	Orange	-	-	14	24	Convex-sided bowl.
BIV	25	2	10	Orange	RED	-	18	25	Convex-sided bowl.
BIV	25	2	10	Orange	-	-	19	31	Convex-sided bowl.
Ffl	23	4	10	Orange	-	-	10	21	Convex-sided bowl.
FflV	22	10	10	Orange	RED	-	16	23	Convex-sided bowl.
BIV	20	6	11	Orange	RED	-	14	22	Convex-sided bowl.
FflV	22	11	11	Grey	-	-	23	31	Convex-sided bowl.
BIV	20	7	12	Grey	-	-	8	18	Convex-sided bowl.
BIV	9	11	12	Orange	-	-	9	21	Convex-sided bowl.
BIV	9	11	12	Orange	-	-	15	21	Convex-sided bowl.
CIII	21	9	12	Grey	-	-	15	26	Convex-sided bowl.
F0	13	5	12	Orange	RED	-	17	26	Convex-sided bowl.
FflV	22	12	12	Grey	-	-	11	20	Convex-sided bowl.
FflV	22	12	12	Grey	-	-	12	20	Convex-sided bowl.
BIV	4	14	14	Orange	RED	BLACK	15	20	Convex-sided bowl.
F0	13	6	14	Orange	-	-	7	22	Convex-sided bowl.
F0	13	6	14	Grey	-	-	12	20	Convex-sided bowl.
BIV	9	13	15	Orange	-	-	16	29	Convex-sided bowl.
BIV	20	8	16	Orange	RED	-	12	23	Convex-sided bowl.
BIV	4	16	16	Orange	-	-	13	21	Convex-sided bowl.
BIV	4	16	16	Orange	RED	-	14	23	Convex-sided bowl.
BIV	24	4	16	Orange	-	-	16	25	Convex-sided bowl.
BIV	14	13	16	Orange	RED	-	18	25	Convex-sided bowl.
BIV	24	4	16	Orange	RED	BLACK	19	30	Convex-sided bowl.
BIV	4	16	16	Orange	RED	BLACK	23	31	Convex-sided bowl.
BIV	19	11	17	Orange	-	-	14	32	Convex-sided bowl.
BIV	19	11	17	Orange	RED	-	17	22	Convex-sided bowl.
BIV	25	4	17	Orange	-	-	25	27	Convex-sided bowl.
BIV	23	9	18	Grey	-	-	10	20	Convex-sided bowl.
FflV	22	10	10	Orange	-	-	18	33	Cooking pot, typical 'Handi' shape.
SURF	0	0	0	Orange	-	-	4	23	Cup with vertical sides and shallow, carinated base.
SURF	0	0	0	Orange	-	-	15	23	Cup with vertical sides and shallow, carinated base.
SURF	0	0	0	Orange	-	-	18	23	Cup with vertical sides and shallow, carinated base.
BIV	4	8	8	Orange	-	-	16	14	Cup with vertical sides and shallow, carinated base.
F0	3	2	9	Orange	-	-	13	9	Cup with vertical sides and shallow, carinated base.
BIV	4	11	11	Grey	-	-	11	25	Cup with vertical sides and shallow, carinated base.
SURF	0	0	0	Buff	-	-	30	30	Dish on stand, flat base; applique decoration on rim.
SURF	0	0	0	Orange	-	-	23	22	Dish on stand.
CIII	21	2	5	Orange	-	-	18	26	Dish on stand.
CIII	21	11	15	Orange	-	-	30	23	Dish on stand, applique decoration on rim.
SURF	0	0	0	Orange	RED	-	0	0	Bowl fragment standing on two legs (originally on four legs)
SURF	0	0	0	Orange	-	-	76	90	Globular jar with attached, but broken, lid.
SURF	0	0	0	Orange	RED	-	52	51	Globular jar with prominent, sharply carinated neck.
SURF	0	0	0	Orange	RED	-	6	46	Lid.

■ *Miniature Pots of Rehman Dheri* ■

Trench	Square	Layer	Level	Colour	Slip	Painting	Height	Diam	Comments
BIV	4	6	6	Grey	-	-	12	33	Lid
SURF	0	0	0	Orange	RED	BLACK	30	38	Ovoid jar in 'Kot Diji' style Wheelmade.
SURF	0	0	0	Orange	RED	BLACK	53	64	Ovoid jar in 'Kot Diji' style Wheelmade.
SURF	0	0	0	Orange	RED	-	26	34	Ovoid jar in 'Kot Diji' style
SURF	0	0	0	Orange	-	-	29	33	Ovoid jar in 'Kot Diji' style
CIII	21	5	8	Orange	RED	-	29	32	Ovoid jar in 'Kot Diji' style
BIV	19	6	10	Orange	-	-	45	42	Ovoid jar in 'Kot Diji' style
BIV	19	6	10	Orange	-	-	40	39	Ovoid jar in 'Kot Diji' style Wheelmade.
BIV	9	11	12	Orange	-	-	36	27	Ovoid jar in 'Kot Diji' style
BIV	9	13	15	Orange	-	-	39	33	Ovoid jar in 'Kot Diji' style Wheelmade.
FIV	17	1	1	Orange	-	-	43	57	Perforated miniature bowl; broken.
BIV	25	1	8	Orange	-	-	28	35	Rimless, globular jar.
BIV	14	13	16	Orange	-	-	22	36	Rimless, globular jar.
BIV	14	14	17	Orange	RED	BLACK	25	35	Rimless, globular jar.
BIV	9	0	0	Orange	RED	-	8	50	Shallow plate.
EII	16	1	1	Orange	-	-	17	50	Shallow plate.
FIV	17	1	1	Orange	-	-	9	57	Shallow plate.
FIV	16	1	1	Orange	-	-	15	61	Shallow plate.
BIV	9	1	2	Orange	-	-	12	54	Shallow plate.
FIV	16	3	3	Orange	-	-	7	48	Shallow plate.
BIV	5	4	4	Orange	-	-	16	65	Shallow plate.
FIV	21	5	5	Orange	-	-	13	54	Shallow plate.
FIV	21	6	6	Orange	-	-	3	40	Shallow plate.
BIV	14	4	6	Orange	-	-	11	64	Shallow plate.
BIV	4	6	6	Orange	-	-	9	60	Shallow plate.
BIV	4	7	7	Orange	-	-	20	63	Shallow plate.
BIV	15	5	7	Orange	-	-	12	56	Shallow plate.
F0	23	1	9	Orange	-	-	11	44	Shallow plate.
F0	23	1	9	Orange	-	-	11	50	Shallow plate.
BIV	25	2	10	Orange	-	-	15	66	Shallow plate.
BIV	9	9	10	Orange	-	-	20	65	Shallow plate.
AIV	5	2	12	Orange	-	-	10	44	Shallow plate.
SURF	0	0	0	Orange	-	-	0	28	Sherds of two miniature bowls stuck together in firing
SURF	0	0	0	Orange	-	-	23	26	Vertical sided bowl with base flaring out Broken.

■ *Birds and Bird Whistles of Rehman Dheri* ■

Trench	Square	Layer	Level	Base Ht	Full Ht	Length	Texture	Colour	Comments
BIV	9	0	0	25	0	0	Medium	Orange	Broken base; shallow pedestal type
BIV	9	0	0	40	0	0	Fine	Orange	Broken base; shallow pedestal type
BIV	9	0	0	35	0	0	Fine	Orange	Broken base; flat type
FO	9	0	0	0	0	0	Medium	Orange	Broken stand for figurine; shallow pedestal base
SURF	0	0	0	0	38	55	Medium	Orange	Tail of bird; decorated with red slip
SURF	0	0	0	20	0	0	Medium	Orange	Broken base; shallow pedestal type
SURF	0	0	0	0	50	14	Fine	Orange	Tail of bird
SURF	0	0	0	30	0	0	Medium	Orange	Broken base; shallow pedestal type
SURF	0	0	0	25	42	29	Fine	Orange	Broken figurine
SURF	0	0	0	9	0	0	Medium	Orange	Broken base; shallow pedestal type
SURF	0	0	0	0	0	0	Fine	Orange	Head of bird figurine; decorated with red slip
SURF	0	0	0	0	0	0	Fine	Orange	Broken figurine
SURF	0	0	0	18	0	0	Medium	Orange	Broken base; shallow pedestal type
SURF	0	0	0	0	0	0	Fine	Orange	Head of bird figurine
SURF	0	0	0	0	52	45	Fine	Orange	Tail of bird
SURF	0	0	0	0	0	0	Fine	Orange	Head of bird figurine
SURF	0	0	0	22	48	35	Fine	Buff	Broken figurine
SURF	0	0	0	0	0	0	Fine	Orange	Head of bird figurine
SURF	0	0	0	9	0	0	Fine	Orange	Broken base; flat type; red slip
SURF	0	0	0	29	0	0	Fine	Orange	Broken base; flat type
SURF	0	0	0	0	0	0	Fine	Orange	Head of bird figurine; decorated with brown slip
SURF	0	0	0	25	0	0	Fine	Orange	Broken base; flat type
SURF	0	0	0	0	0	0	Medium	Buff	Head of bird figurine
SURF	0	0	0	0	0	0	Fine	Orange	Beak of bird; eyes perforated
SURF	0	0	0	23	70	71	Fine	Buff	Broken whistle; painted feather-spines on tail
SURF	0	0	0	15	0	31	Fine	Orange	Broken base; shallow pedestal type
SURF	0	0	0	19	36	41	Medium	Orange	Broken figurine
SURF	0	0	0	0	0	0	Fine	Orange	Broken head
SURF	0	0	0	0	0	0	Fine	Orange	Broken figurine
SURF	0	0	0	0	0	0	Fine	Orange	Broken head; comb impressions; perforated eyes
SURF	0	0	0	22	45	39	Fine	Orange	Broken figurine
SURF	0	0	0	10	0	22	Fine	Orange	Broken base; shallow pedestal type
SURF	0	0	0	0	0	0	Fine	Orange	Head of bird figurine
SURF	0	0	0	25	0	64	Medium	Orange	Bird whistle with broken head
SURF	0	0	0	0	0	0	Fine	Orange	Head of bird figurine
SURF	0	0	0	15	0	0	Fine	Grey	Broken base; shallow pedestal type
SURF	0	0	0	24	0	0	Medium	Orange	Broken base; shallow pedestal type
SURF	0	0	0	29	0	0	Medium	Orange	Broken base; shallow pedestal type
SURF	0	0	0	0	0	0	Fine	Buff	Head of bird figurine
SURF	0	0	0	30	0	0	Medium	Orange	Broken base; shallow pedestal type
SURF	0	0	0	0	0	0	Fine	Orange	Head of bird figurine
SURF	0	0	0	0	0	0	Fine	Grey	Broken figurine
SURF	0	0	0	0	0	0	Fine	Orange	Head of bird figurine
SURF	0	0	0	31	0	0	Fine	Orange	Broken figurine
SURF	0	0	0	0	0	0	Fine	Orange	Broken base of whistle; shows point of attachment
SURF	0	0	0	21	30	0	Fine	Orange	Broken base; flat type
SURF	0	0	0	0	0	0	Fine	Orange	Broken figurine
SURF	0	0	0	19	51	53	Fine	Orange	Broken figurine
BIV	4	1	1	0	0	0	Fine	Orange	Head of bird figurine; decorated with red slip
EII	17	1	1	0	35	25	Fine	Buff	Tail of bird

■ *Birds and Bird Whistles of Rehman Dheri* ■

Trench	Square	Layer	Level	Base Ht.	Full Ht.	Length	Texture	Colour	Comments
EII	21	1	1	0	0	0	Coarse	Grey	Broken whistle
FfIV	21	1	1	0	33	68	Fine	Orange	Bird whistle
BIV	9	1	2	26	0	0	Fine	Orange	Broken base; shallow pedestal type
BIV	9	1	2	0	40	36	Medium	Buff	Base of bird whistle; shallow pedestal type
BIV	9	1	2	30	0	0	Medium	Orange	Broken base; flat type
BIV	5	3	3	22	36	45	Fine	Buff	Broken figurine
FfIV	21	3	3	0	0	0	Fine	Orange	Head of bird figurine
FfIV	21	3	3	0	0	0	Medium	Orange	Head of bird figurine
FfIV	17	3	3	0	25	0	Fine	Orange	Broken base; shallow pedestal type
FfIV	21	3	3	30	0	0	Fine	Buff	Broken base
FfIV	21	3	3	0	0	0	Fine	Buff	Head of bird whistle
FfIV	21	3	3	0	0	0	Fine	Orange	Head of bird figurine
FfIV	21	3	3	0	0	0	Medium	Orange	Head of bird figurine
FfIV	21	3	3	0	0	0	Fine	Buff	Head of bird figurine
FfIV	17	3	3	0	0	0	Fine	Orange	Stem and bottom of bird whistle
FfIV	21	3	3	0	0	0	Fine	Orange	Broken head
CIII	21	1	4	0	0	0	Medium	Orange	Broken bird whistle
FfIV	21	4	4	0	0	0	Fine	Grey	Head of bird figurine
FfIV	21	4	4	0	0	0	Medium	Buff	Head of bird figurine
FfIV	22	4	4	0	0	0	Medium	Buff	Hind portion of bird whistle
FfIV	21	4	4	0	0	0	Medium	Orange	Tail of bird
CIII	21	2	5	35	0	0	Fine	Buff	Broken base; shallow pedestal type
BIV	19	3	7	11	0	0	Fine	Orange	Broken base; flat type.
BIV	20	3	8	17	52	35	Fine	Orange	Broken bird figurine
BIV	20	3	8	29	35	33	Fine	Orange	Broken bird whistle on shallow pedestal base
BIV	20	3	8	0	0	0	Medium	Orange	Broken base; overfired
BIV	24	1	8	31	0	0	Fine	Buff	Broken base; shallow pedestal type
CIII	21	5	8	26	0	0	Fine	Buff	Broken base; flat type; brown slip
EII	17	8	8	18	29	46	Fine	Orange	Broken base; shallow pedestal style
FO	4	1	8	0	0	0	Fine	Orange	Head of bird figurine
FfI	23	2	8	17	0	0	Fine	Buff	Broken base; flat type
FfI	23	2	8	0	0	0	Fine	Orange	Fragment of bird whistle
FfI	23	2	8	19	0	0	Fine	Orange	Broken base; shallow pedestal type
FfI	23	2	8	0	50	0	Fine	Orange	Base of bird whistle
FfI	18	2	8	35	0	0	Fine	Orange	Broken stand for figurine; shallow pedestal base
FO	3	2	9	0	0	0	Medium	Orange	Broken stand for figurine; flat base
FfI	18	3	9	0	27	34	Fine	Orange	Tail of bird with painted feather spines
FfI	18	3	9	0	0	0	Fine	Buff	Painted tail of bird
FfI	23	3	9	25	35	28	Fine	Orange	Broken bird figurine on shallow pedestal base
E0	6	4	11	0	0	0	Fine	Buff	Head of bird figurine
FfIV	22	11	11	0	0	0	Medium	Orange	Broken stand for figurine; flat base
FfIV	22	11	11	0	0	0	Medium	Orange	Broken stand for figurine; shallow pedestal base
BIV	19	8	12	33	74	42	Medium	Orange	Broken bird whistle
BIV	25	3	12	0	25	46	Fine	Orange	Rattle in duck
FfIV	22	12	12	21	0	0	Medium	Buff	Broken figurine, without head, tail or base
BIV	4	13	13	20	0	0	Medium	Buff	Broken base; flat type
BIV	9	12	14	35	0	0	Fine	Orange	Bird whistle on shallow pedestal base
BIV	4	14	14	12	0	0	Fine	Grey	Broken base; flat type
BIV	14	14	14	23	41	43	Fine	Orange	Broken bird whistle
CIII	21	11	15	0	37	0	Fine	Buff	Broken figurine

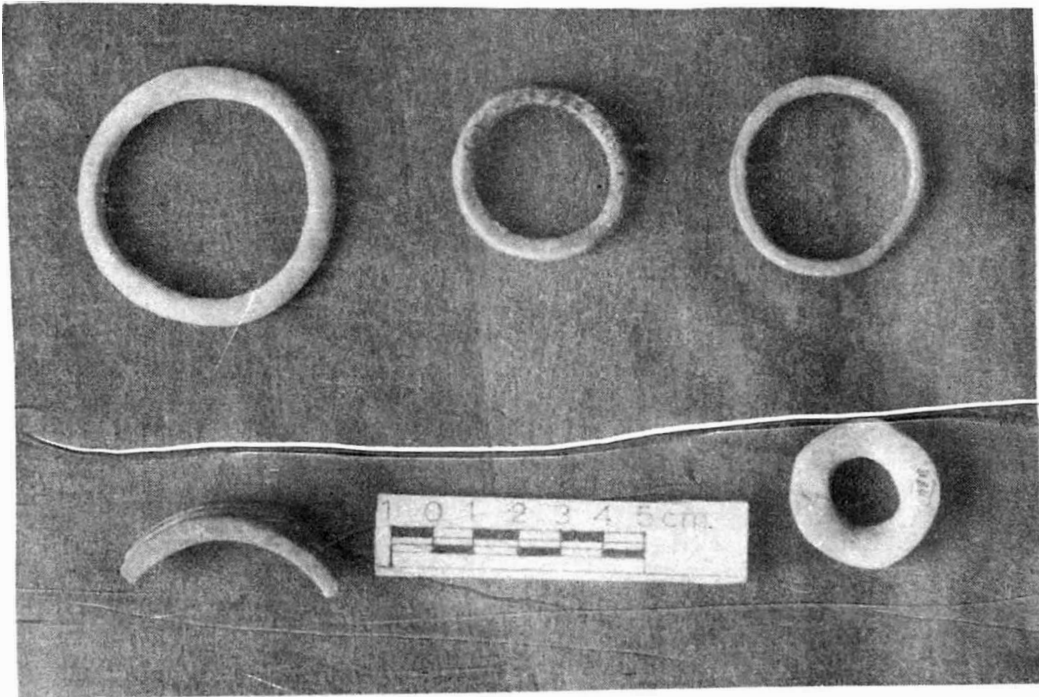
Trench	Square	Layer	Level	Base Ht	Full Ht.	Length	Texture	Colour	Comments
BIV	4	16	16	25	58	65	Fine	Orange	Complete bird figurine on shallow pedestal base
BIV	4	16	16	16	27	55	Fine	Buff	Broken figurine; painted feather-spines on tail
BIV	20	8	16	19	0	0	Fine	Orange	Broken base; shallow pedestal type.
BIV	19	10	16	25	40	30	Fine	Orange	Broken base; shallow pedestal type
BIV	20	9	17	0	55	72	Fine	Orange	Broken bird figurine; scar of broken base visible
BIV	20	9	17	0	34	0	Medium	Buff	Tail of bird
BIV	20	9	17	30	0	0	Medium	Orange	Broken base; flat type; overfired
BIV	25	7	20	0	0	0	Medium	Orange	Broken stand for figurine; flat base

Trench	Square	Layer	Level	Colour	Texture	Diameter	Min. Width	Max. Width	Comment
BIV	14	0	0	Buff	Coarse	93	15	32	
BIV	14	0	0	Orange	Coarse	100	11	29	
SURF	0	0	0	Orange	Medium	67	10	21	
SURF	0	0	0	Buff	Coarse	0	12	16	
SURF	0	0	0	Buff	Coarse	69	11	17	
SURF	0	0	0	Buff	Coarse	49	12	18	
SURF	0	0	0	Buff	Coarse	95	20	44	
SURF	0	0	0	Orange	Medium	62	9	19	
SURF	0	0	0	Orange	Coarse	69	13	22	
SURF	0	0	0	Orange	Coarse	75	18	28	Complete.
BIV	5	1	1	Orange	Fine	61	10	14	
BIV	5	1	1	Orange	Coarse	66	20	26	
BIV	5	1	1	Orange	Coarse	0	17	32	
EII	16	1	1	Orange	Coarse	54	12	22	Complete, spokes of wheel painted in black.
FIV	21	1	1	Buff	Coarse	130	19	28	Complete.
FIV	17	1	1	Orange	Medium	122	10	21	Complete
FIV	17	2	2	Orange	Medium	95	14	33	
BIV	5	2	2	Buff	Coarse	103	15	28	
BIV	4	2	2	Buff	Medium	0	9	16	Spokes of wheel painted in black.
BIV	9	1	2	Orange	Coarse	75	13	16	
EII	17	2	2	Orange	Coarse	62	20	28	
BIV	4	3	3	Orange	Medium	93	11	22	Complete, signs of scraping
BIV	5	3	3	Orange	Medium	54	12	20	Complete.
BIV	5	3	3	Buff	Medium	52	9	16	Complete.
EII	21	3	3	Orange	Coarse	85	15	26	
EIV	16	3	3	Buff	Coarse	93	13	38	
FIV	16	3	3	Orange	Medium	44	5	20	
FIV	21	3	3	Orange	Coarse	70	13	24	
BIV	9	3	4	Orange	Coarse	60	19	25	
BIV	9	3	4	Buff	Coarse	104	12	28	
BIV	4	4	4	Buff	Coarse	68	13	25	Overfired.
CIII	21	1	4	Buff	Coarse	0	20	31	
EII	21	4	4	Orange	Coarse	70	16	23	
CIV	21	2	5	Orange	Medium	77	15	20	Complete, spokes of wheel painted in black
FIV	21	6	6	Orange	Medium	54	12	22	Complete; red slipped
BIV	20	2	7	Orange	Medium	83	19	21	
BIV	20	2	7	Buff	Coarse	20	16	18	
BIV	20	2	7	Orange	Coarse	85	20	21	
BIV	20	2	7	Buff	Coarse	76	21	22	
BIV	20	2	7	Orange	Medium	70	12	15	
CIV	21	4	7	Buff	Medium	88	17	25	
CIV	21	4	7	Orange	Medium	70	14	19	
D0	5	1	7	Orange	Medium	49	9	16	Complete.
D0	5	1	7	Orange	Medium	65	20	29	Complete, red dots painted on a cream slip.
D0	5	1	7	Orange	Fine	77	14	19	
FO	3	1	8	Orange	Coarse	108	14	28	Black rings painted around hub, and on periphery
FO	4	1	8	Orange	Medium	64	9	22	
F0	13	2	9	Buff	Fine	60	10	20	Complete, incised proto-Indus sign, finger-marks.
BIV	4	10	10	Buff	Coarse	40	9	12	
CIV	21	7	10	Orange	Medium	49	9	12	Complete.
FIV	22	10	10	Orange	Coarse	54	13	16	
FIV	22	10	10	Orange	Fine	0	26	0	
BIV	14	9	11	Orange	Medium	44	17	18	Complete, spokes of wheel painted in black.
BIV	14	9	11	Buff	Medium	59	10	12	
AIV	4	2	12	Orange	Coarse	41	8	18	Complete.
BIV	14	10	12	Orange	Medium	71	17	22	
BIV	9	12	14	Orange	Coarse	90	15	25	Complete, spokes of wheel painted in black.
BIV	4	16	16	Orange	Coarse	114	12	25	

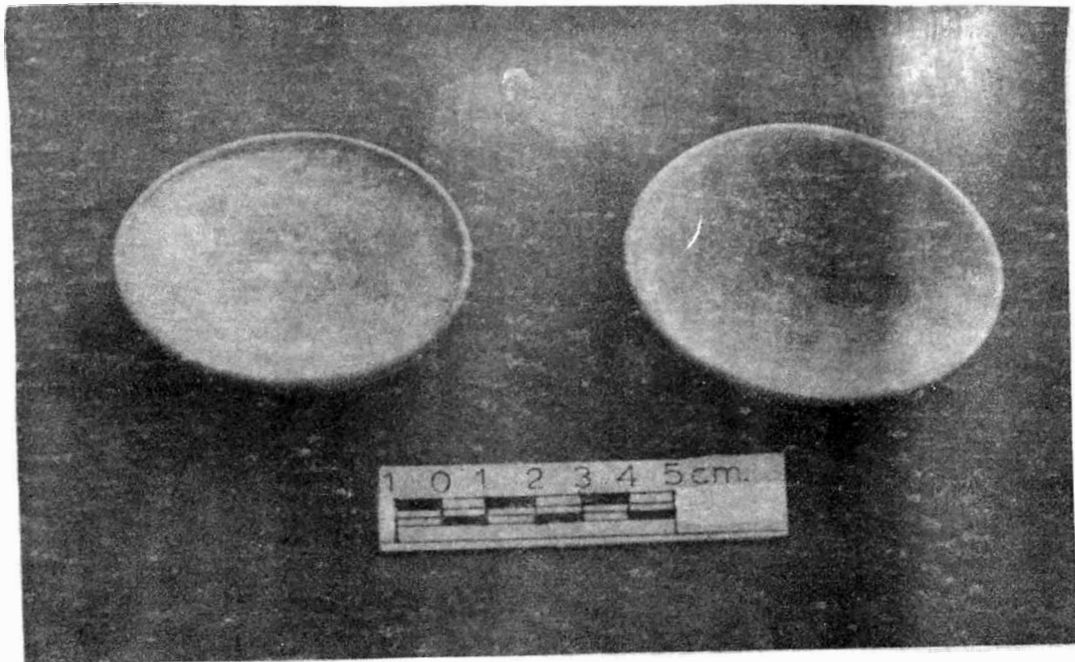
No	Trench	Sqr	Layer	Level	Texture	Colour	Slip	Painting	Length	Width	Height	Comments
1	FIV	22	0	0	Coarse	Grey	-	-	00	55	00	Hollow, cylindrical (?) object, possibly a roller
2	BIV	10	2	3	Fine	Buff	-	-	00	00	00	Broken toy cart frame with two perforations
3	FIV	17	4	4	Medium	Orange	-	-	00	00	00	Broken end of cart frame with 2 perforations at right angles, one incomplete
4	FIV	22	3	3	Coarse	Buff	-	-	00	00	00	Broken toy cart frame with two perforations, overtired
5	EII	16	19	20	Fine	Orange	RED	-	99.5	25	7.5	Terracotta sharpener
6	EII	16	13	14	Fine	Orange	RED	BLACK	00	00	00	Broken stud handle of pot. Painted black band across end
7	BIV	23	2	8	Fine	Orange	RED	-	00	35	9.8	Complete bangle with a rectangular cross-section
8	CIV	21	4	12	Fine	Grey	-	-	00	42	4.0	Complete bangle with a rectangular cross-section
9	FII	23	2	8	Fine	Grey	-	-	00	42	6.1	Complete bangle with a trapezoid cross-section
10	SURF	0	0	0	Fine	Orange	RED	-	00	39.2	21	Terracotta dabber, broken
11	BIV	9	14	16	Fine	Orange	RED	-	00	31.1	00	Cylindrical object of unknown purpose, one end hollow
12	SURF	0	0	0	Fine	Orange	RED	-	00	00	00	Tail of bird (?), long, slim, slightly curving object perforated at the end
13	SURF	0	0	0	Fine	Orange	-	-	00	00	00	Spoon (?) with broken handle
14	SURF	0	0	0					00	00	00	Conical stud of terracotta with pointed end
15	FII	23	4	10	Medium	Orange	-	-	00	3.7	2.2	Terracotta bicone, unperforated and possibly a weight
16	SURF	0	0	0	Coarse	Orange	-	-	00	48	00	Slingball - irregular in shape
17	SURF	0	0	0	Medium	Orange	-	-	00	65	00	Slingball - incised and impressed circlelets all over the surface
18	SURF	0	0	0	Medium	Orange	-	-	00	27	00	Slingball - broken
19	SURF	0	0	0	Medium	Orange	RED	-	00	30	00	Slingball
20	SURF	0	0	0	Fine	Orange	-	-	00	47	00	Slingball - broken
21	SURF	0	0	0	Fine	Orange	-	-	00	28	00	Slingball - broken
22	SURF	0	0	0	Fine	Orange	-	-	00	29	00	Slingball - broken
23	SURF	0	0	0	Fine	Orange	RED	-	00	23	00	Slingball - broken
24	SURF	0	0	0	Fine	Orange	-	-	00	13	00	Slingball
25	SURF	0	0	0	Fine	Orange	RED	-	00	38	00	Slingball - painted black band as well as two black crosses set within black circles
26	BV	9	0	0	Fine	Orange	RED	-	00	23	00	Slingball
27	BIV	9	3	4	Coarse	Orange	-	-	00	00	00	Slingball - broken
28	EII	17	5	5	Fine	Orange	-	-	00	43	00	Slingball - charcoal embedded in fabric
29	EII	17	5	5	Fine	Orange	-	-	00	45	00	Slingball - charcoal embedded in fabric
30	EII	17	5	5	Fine	Orange	-	-	00	44	00	Slingball - charcoal embedded in fabric
31	EII	17	5	5	Fine	Orange	-	-	00	43	00	Slingball
32	EII	17	5	5	Fine	Orange	-	-	00	41	00	Slingball - charcoal embedded in fabric
33	EII	17	5	5	Fine	Orange	-	-	00	35	00	Slingball
34	EII	17	5	5	Fine	Orange	-	-	00	38	00	Slingball - broken
35	EII	17	5	5	Fine	Orange	-	-	00	38	00	Slingball - broken
36	EII	17	5	5	Fine	Orange	-	-	00	41	00	Slingball
37	EII	17	5	5	Fine	Orange	-	-	00	44	00	Slingball
38	EII	17	5	5	Fine	Orange	-	-	00	41	00	Slingball
39	EII	17	5	5	Fine	Orange	-	-	00	43	00	Slingball
40	EII	17	5	5	Fine	Orange	-	-	00	33	00	Slingball
41	EII	17	5	5	Fine	Orange	-	-	00	41	00	Slingball - broken
42	EII	17	5	5	Fine	Orange	-	-	00	33	00	Slingball
43	EII	17	5	5	Fine	Orange	-	-	00	34	00	Slingball
44	EII	17	5	5	Fine	Orange	-	-	00	41	00	Slingball
45	EII	17	5	5	Fine	Orange	-	-	00	36	00	Slingball - broken
46	EII	17	5	5	Fine	Orange	-	-	00	42	00	Slingball
47	EII	17	5	5	Fine	Orange	-	-	00	37	00	Slingball - broken
48	EII	17	5	5	Fine	Orange	-	-	00	41	00	Slingball - broken
49	EII	17	5	5	Fine	Orange	-	-	00	44	00	Slingball - broken

■ *Miscellaneous Objects of Rehman Dheri* ■

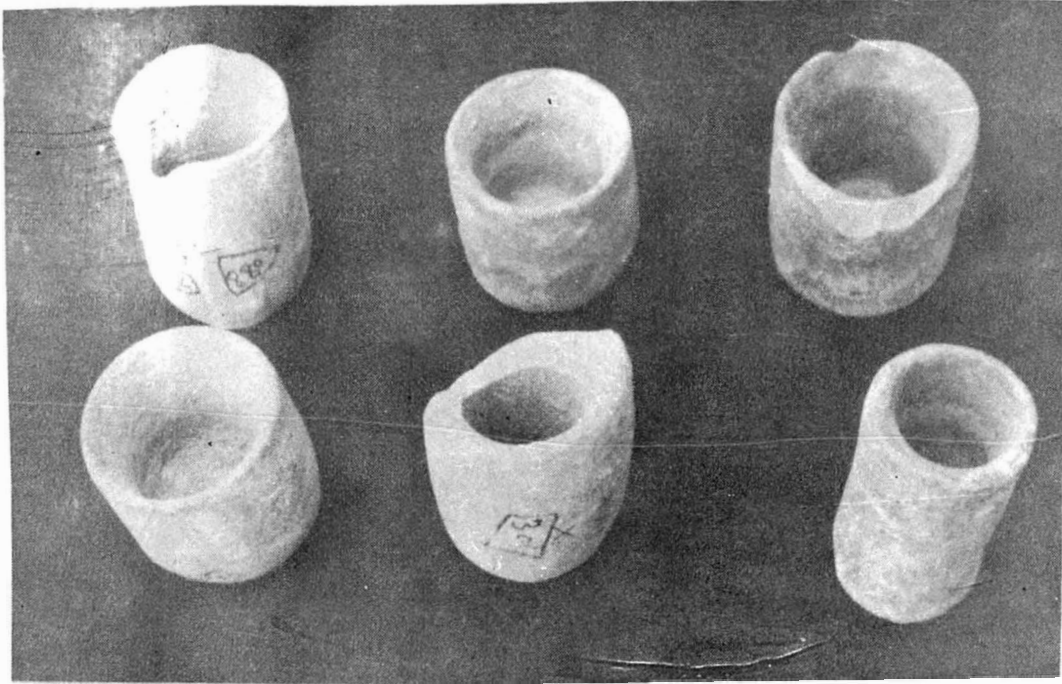
No	Trench	Sqr	Layer	Level	Texture	Colour	Slip	Painting	Length	Width	Height	Comments
50	F0	23	3	11	Fine	Orange	-	-	0.0	31	0.0	Slingball/rattle.
51	BIV	20	7	12	Fine	Grey	-	-	0.0	31	0.0	Slingball
52	BIV	20	7	12	Medium	Orange	-	-	0.0	40	0.0	Slingball.
53	BIV	20	9	17	Fine	Orange	-	-	0.0	24	0.0	Slingball - dotted surface.
54	BIV	20	10	18	Medium	Orange	-	-	0.0	35	0.0	Slingball - irregular in shape.



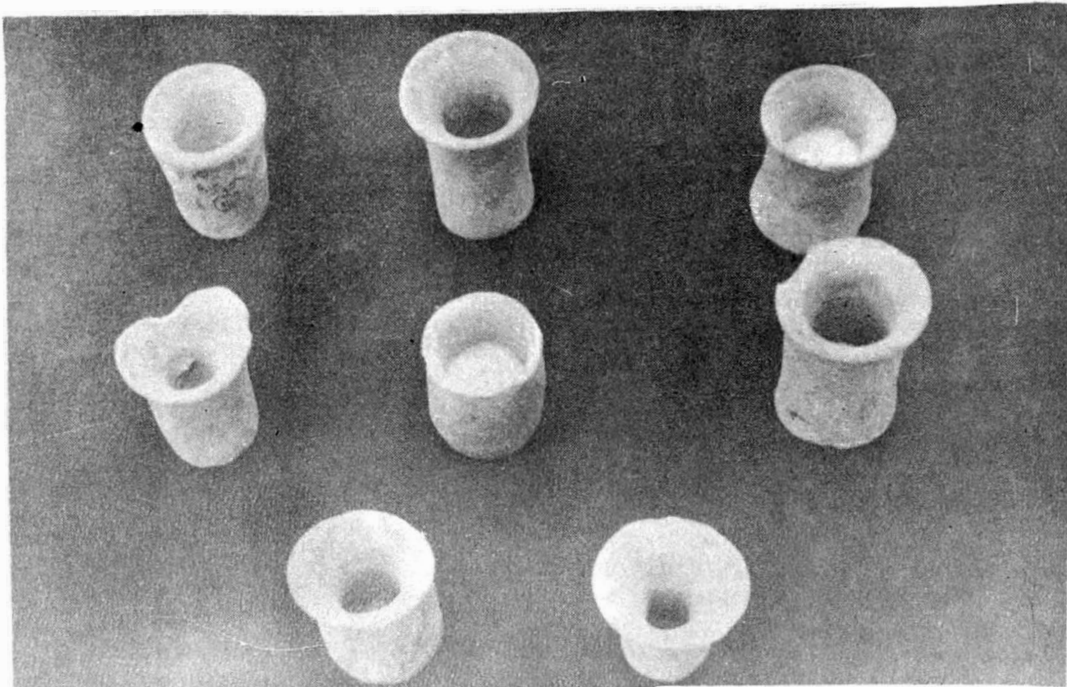
1. Terracotta Bangles.



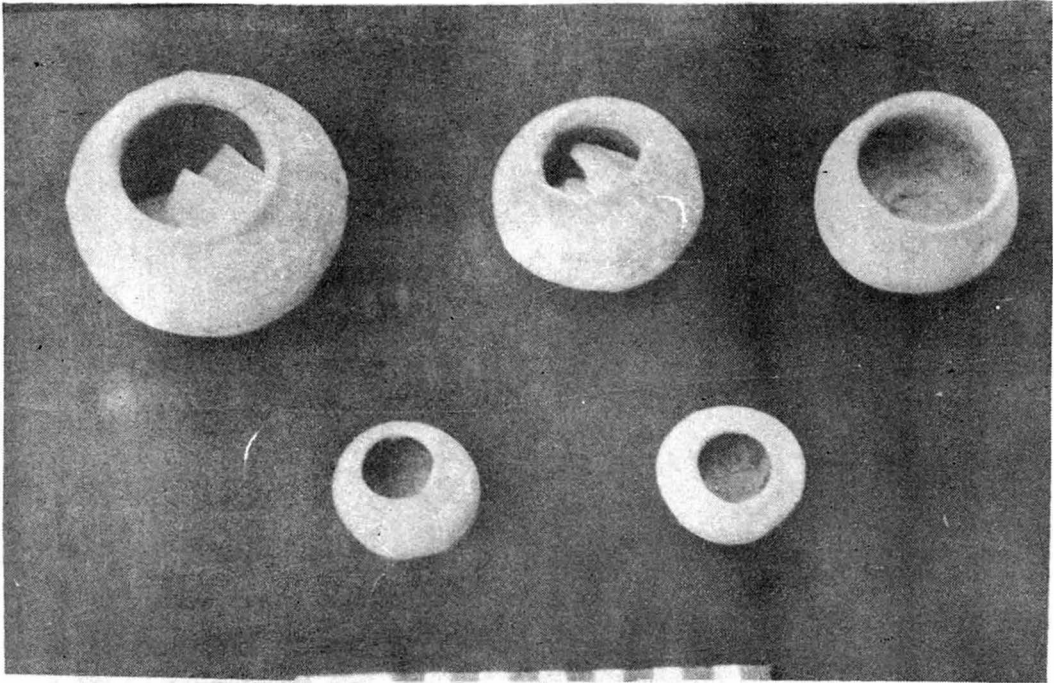
2. Basins.



1. Beakers/Dice Throwers.



2. Beakers/Dice Throwers.



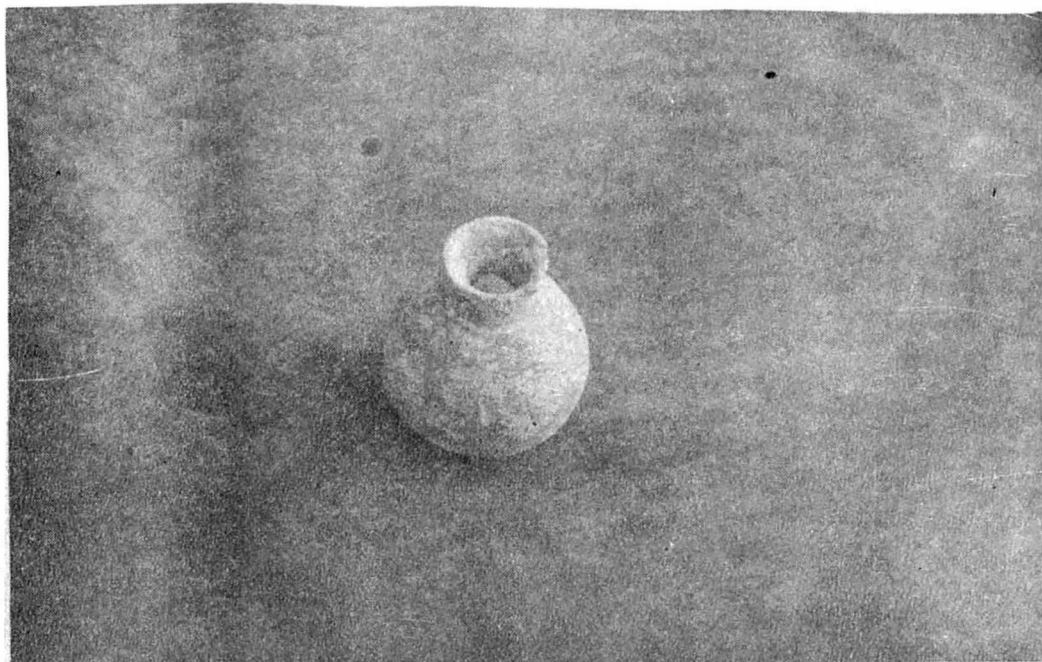
1. Minor Pots.



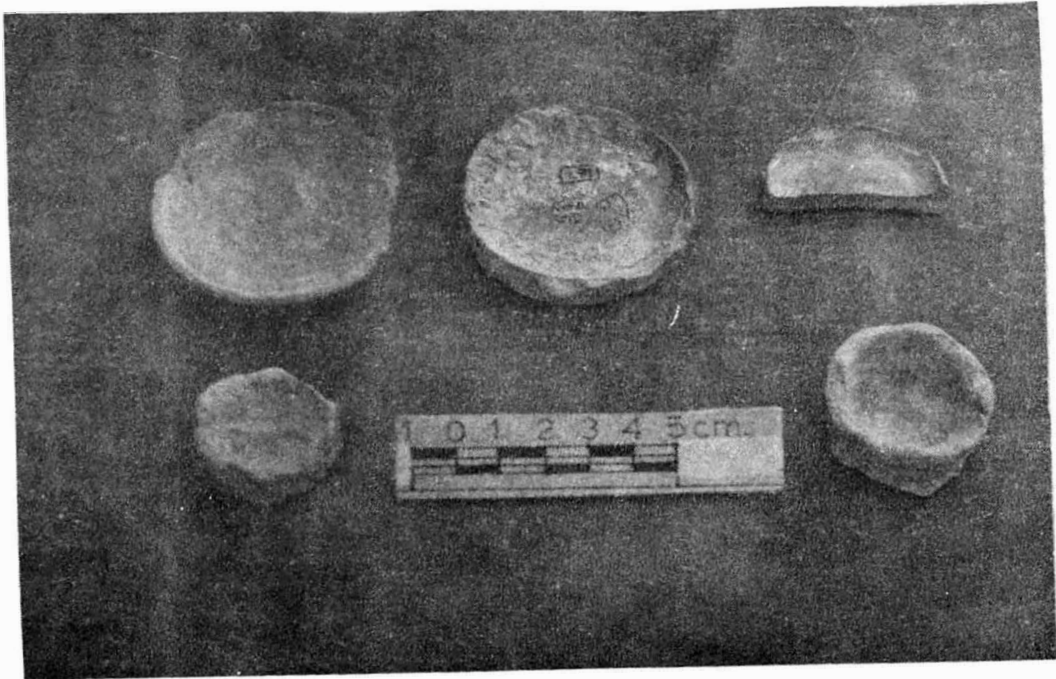
2. Cups.



1. Parts of dish on stands.



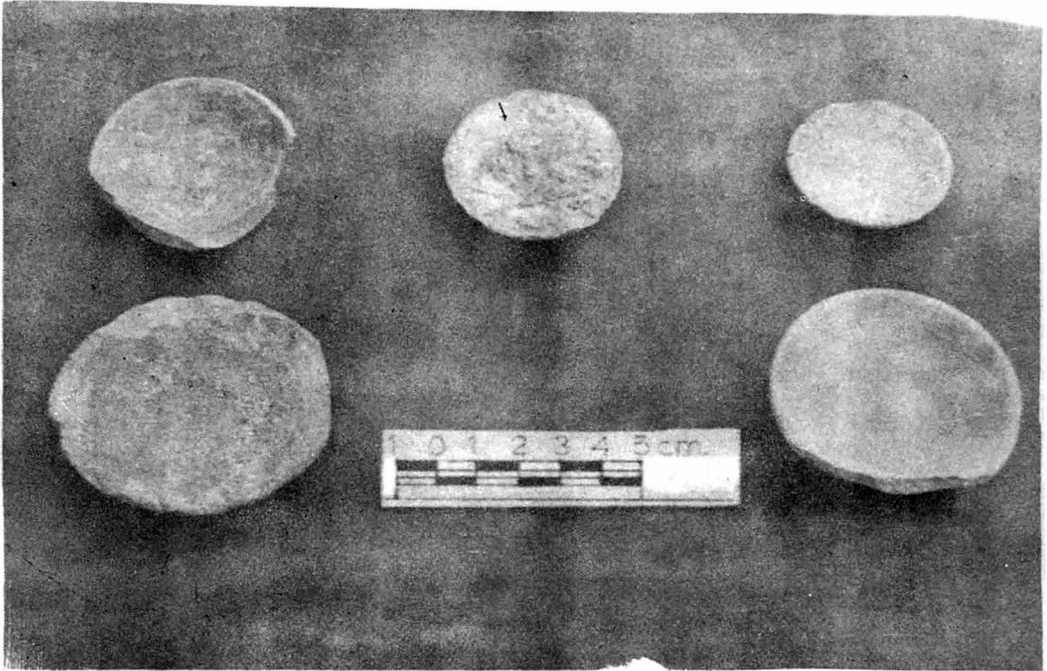
2. Globular pitcher with narrow neck.



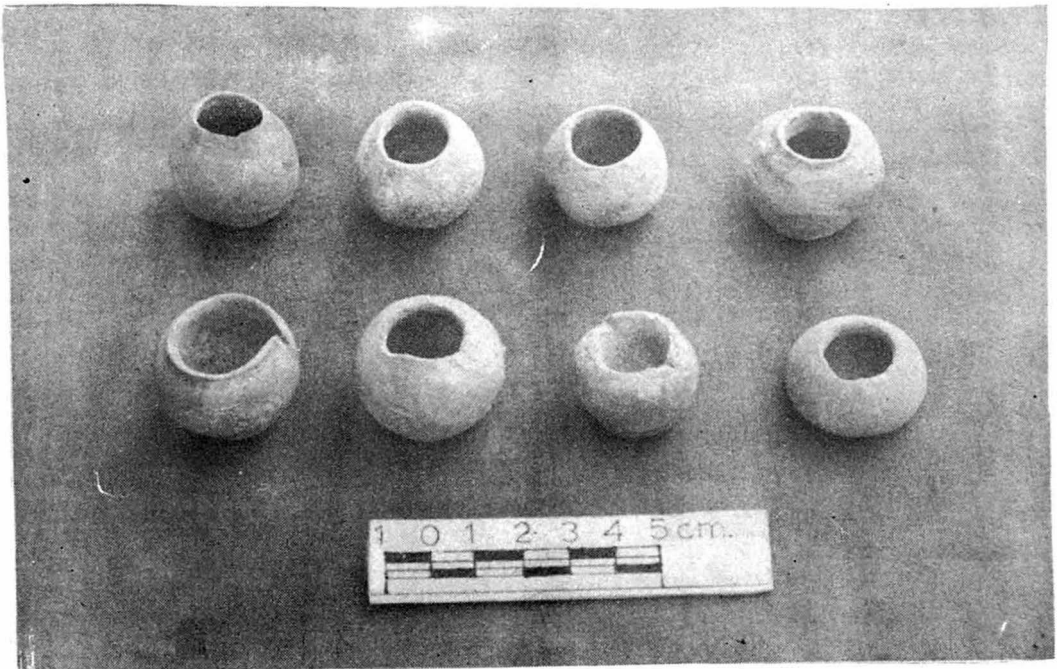
1. Lids/Shallow pots.



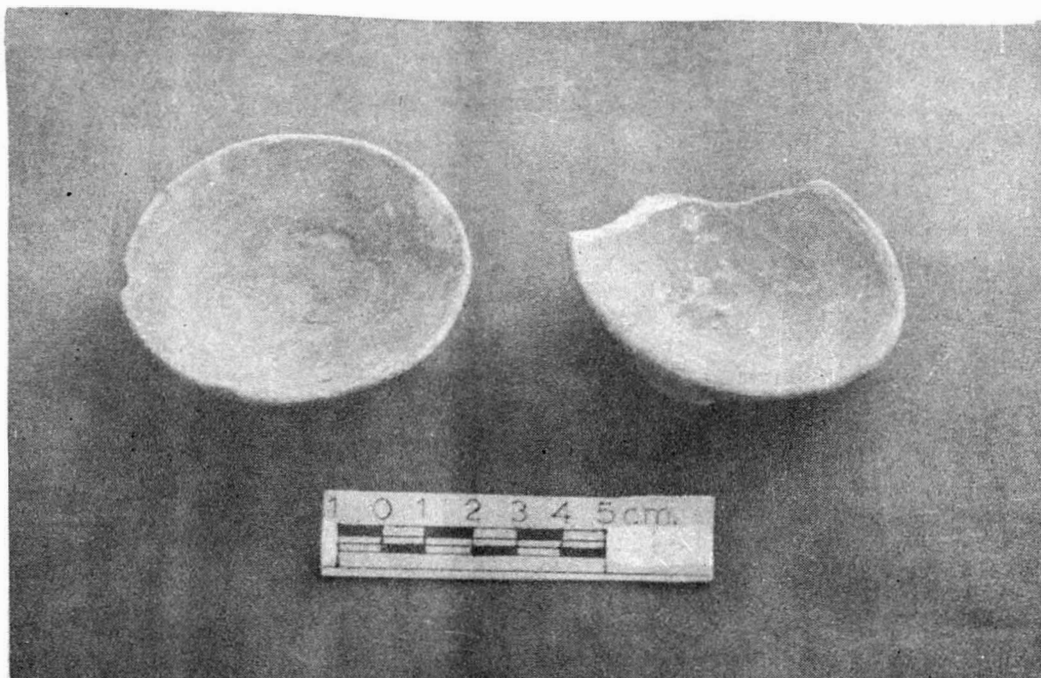
2. A pot covered with lid.



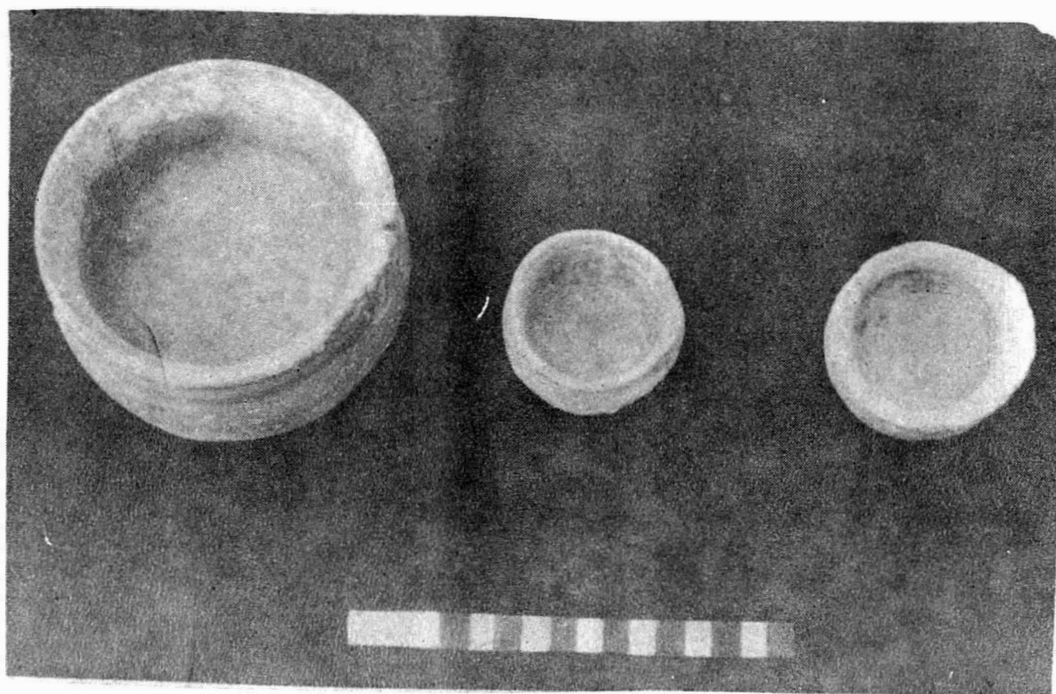
1. Saucers.



2. Tiny pots.



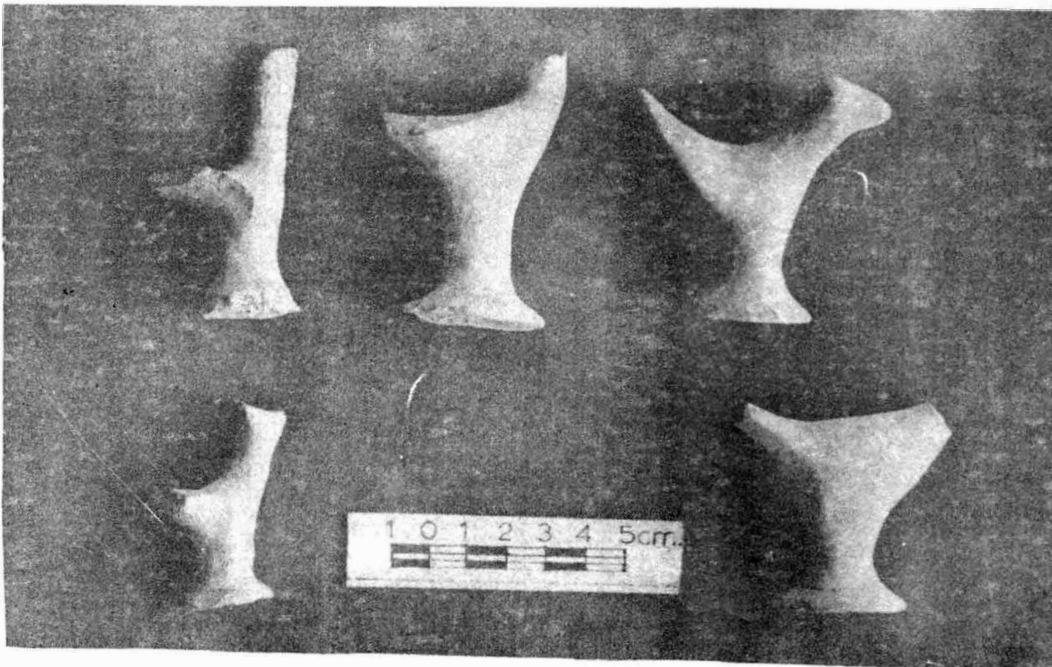
1. Shallow plates.



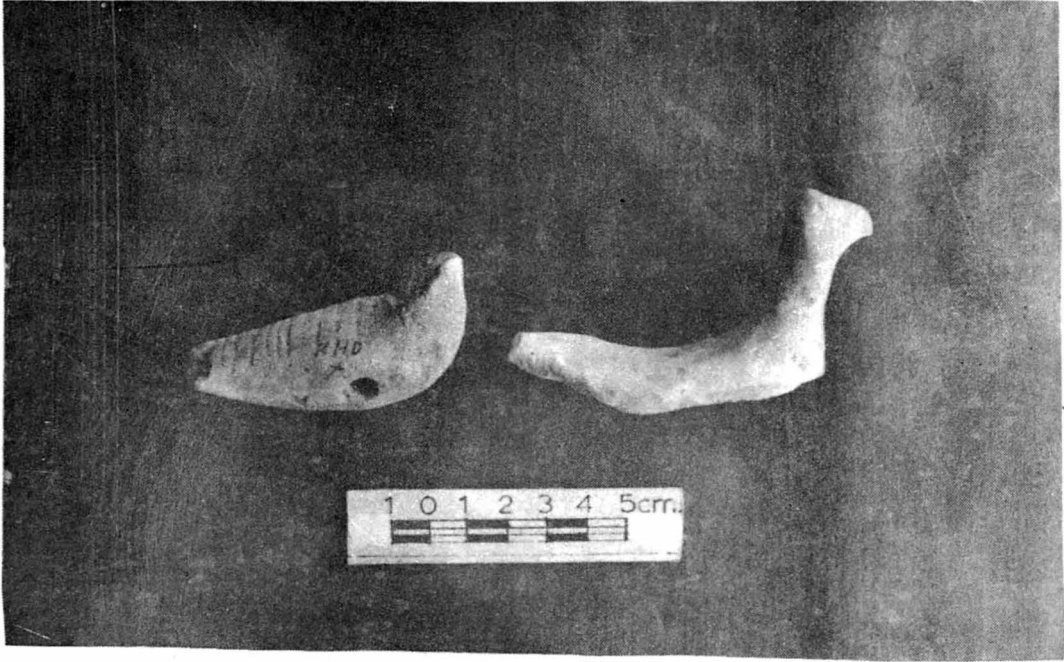
2. Cooking pots.



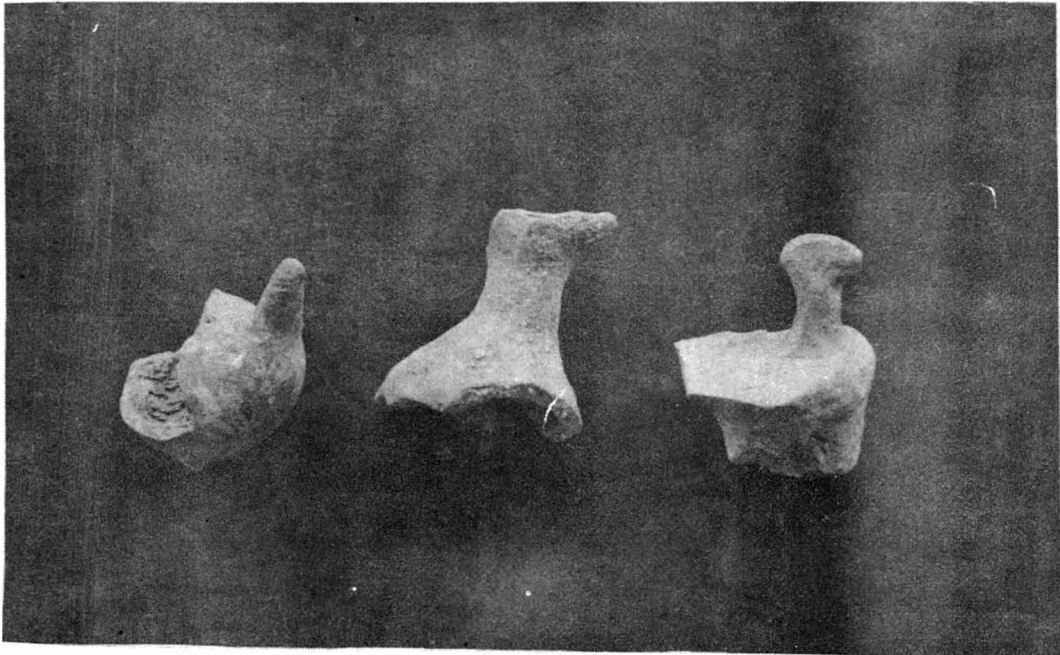
1. Birds Heads.



2. Terracotta Birds.



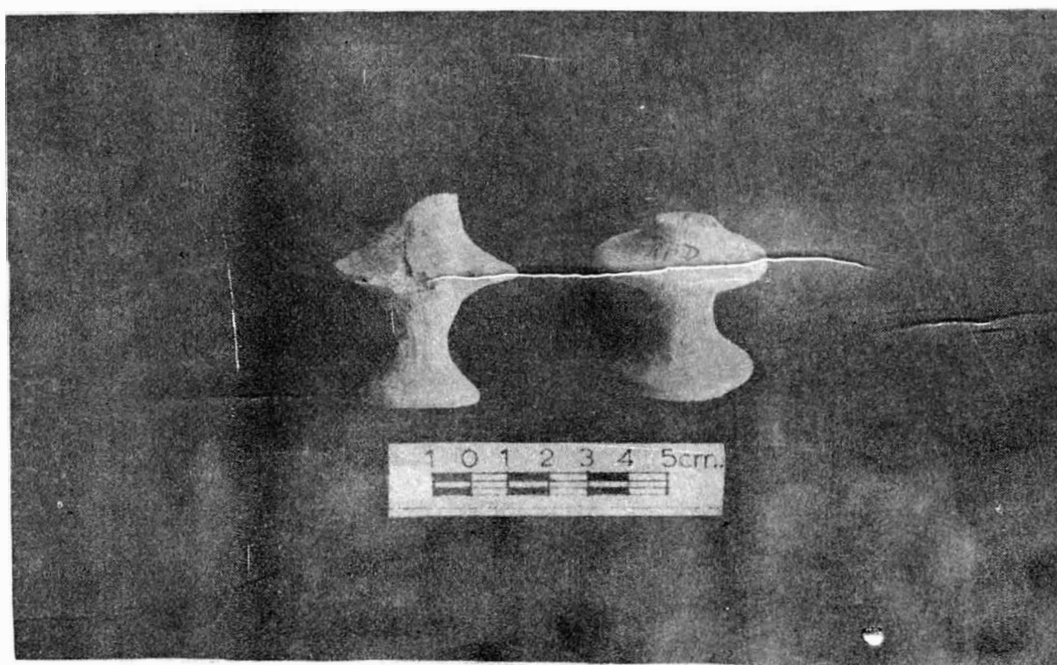
1. Terracotta Birds.



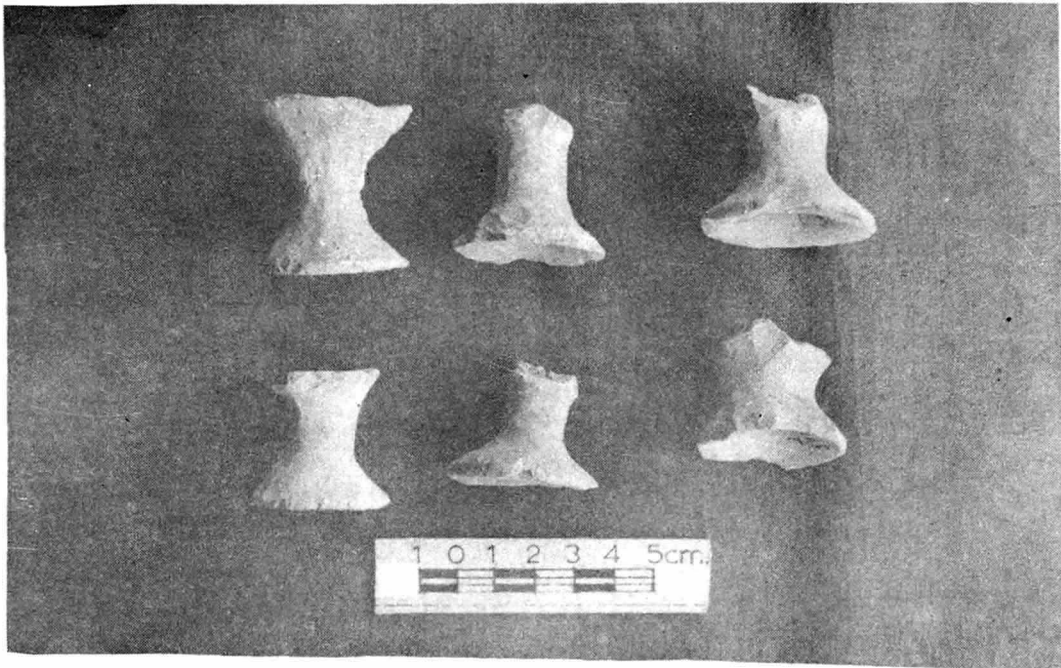
2. Bird whistles.



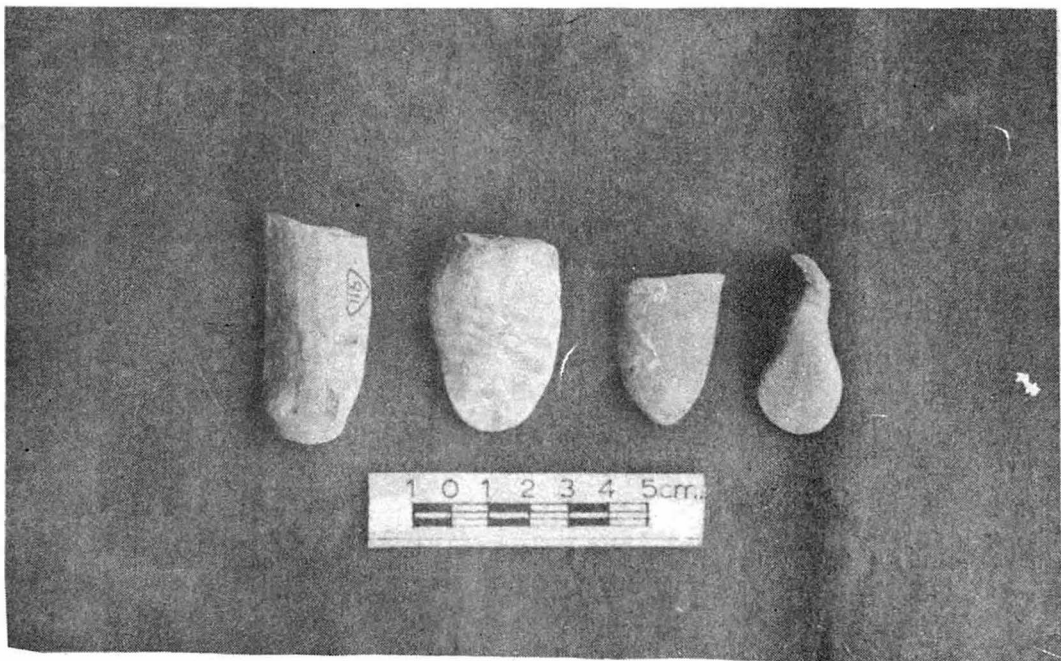
1. Bird Whistles.



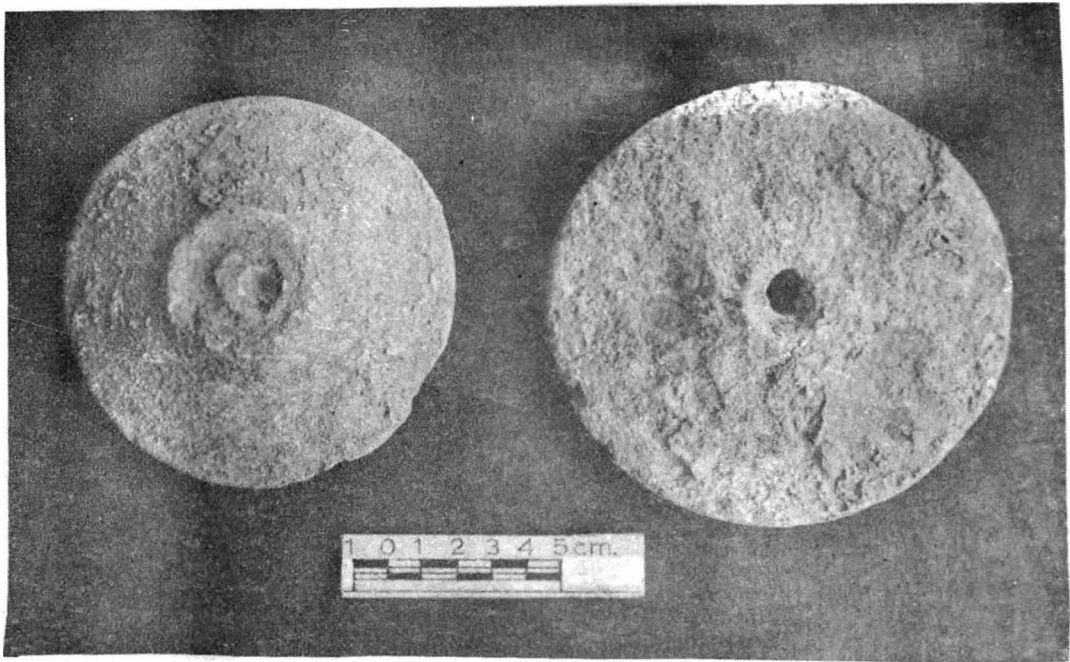
2. Bird Stands.



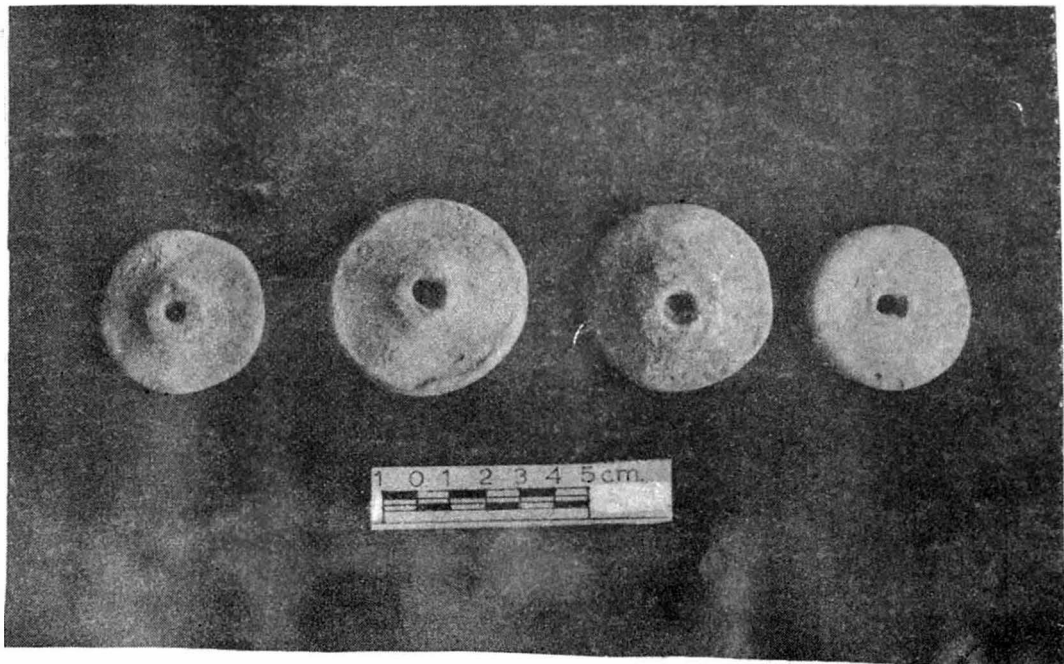
1. Bird Stands.



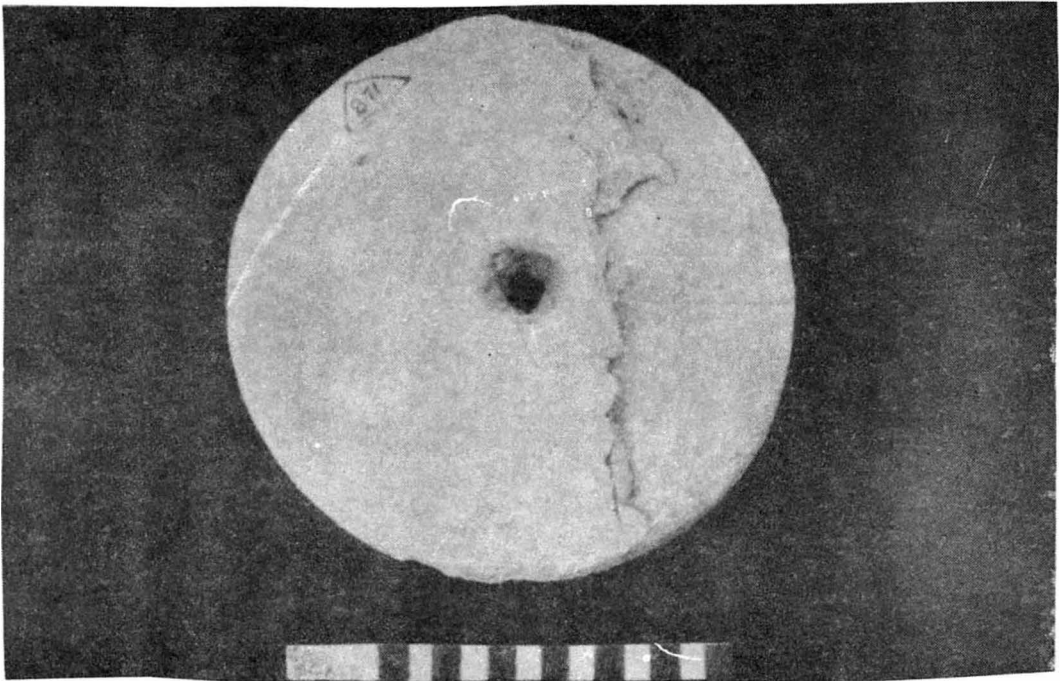
2. Bird Tails.



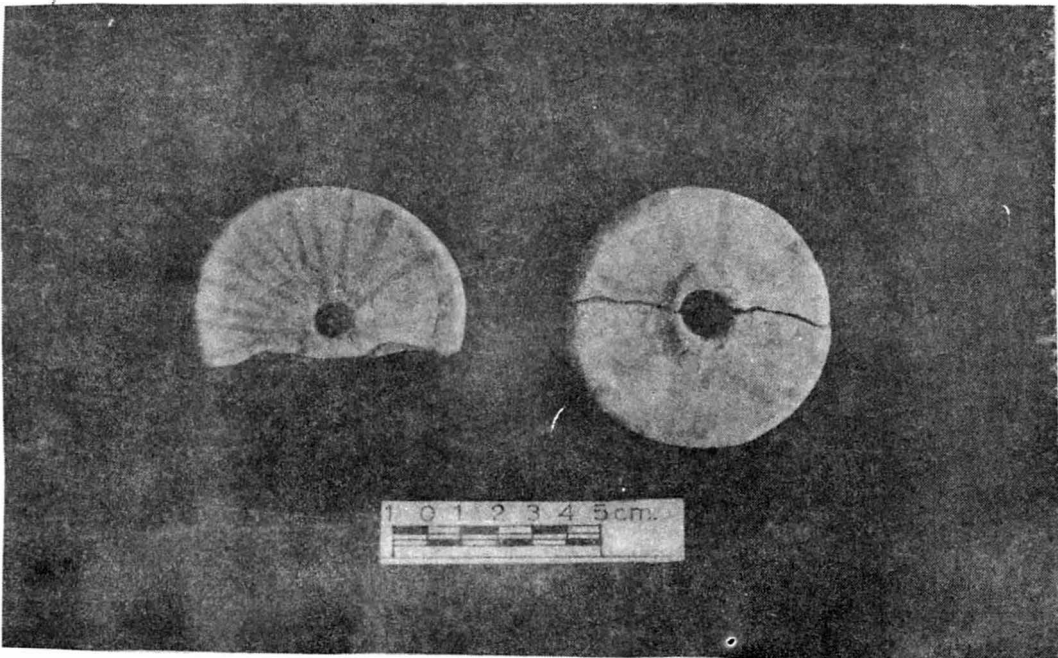
1. Terracotta Wheels.



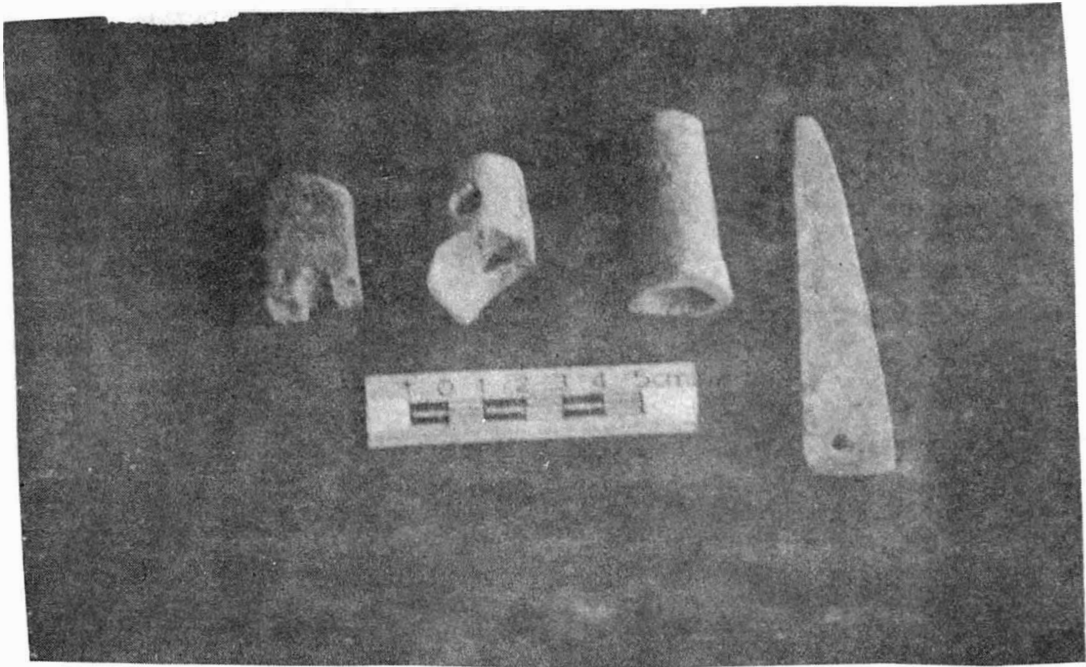
2. Terracotta Wheels.



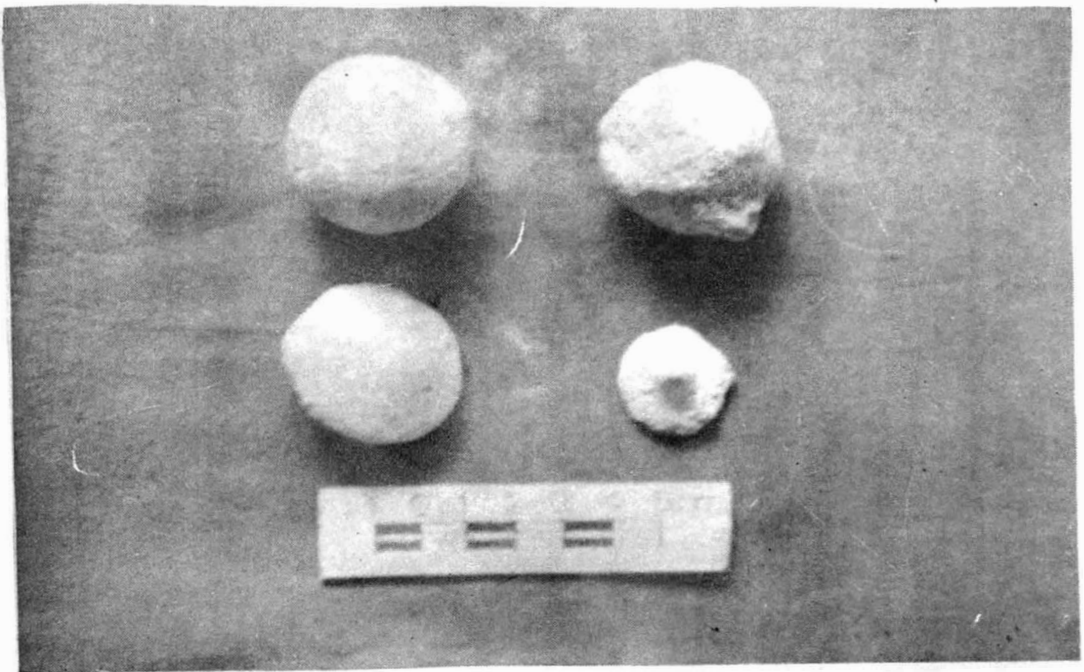
1. Terracotta Wheel



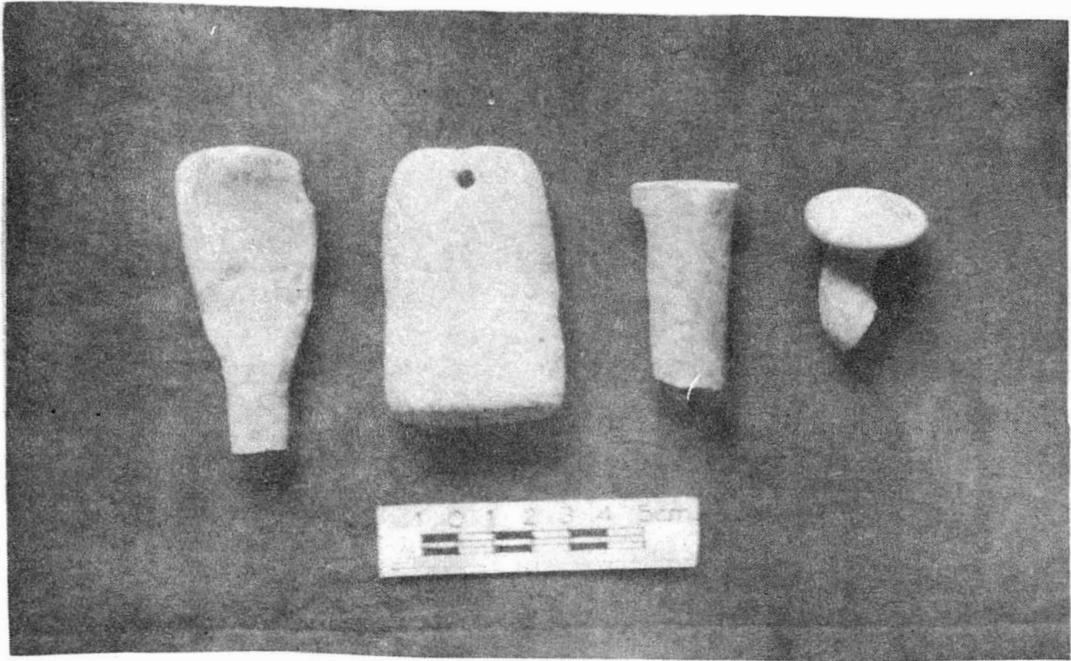
2. Terracotta Painted Wheels.



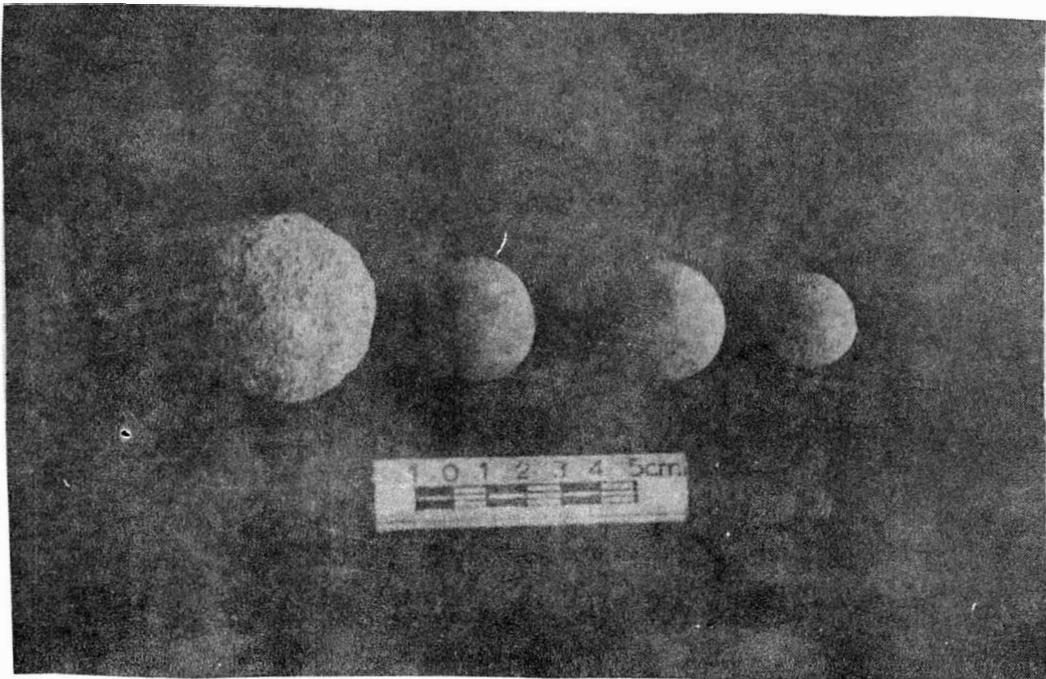
1. Miscellaneous Terracotta Objects.



2. Miscellaneous Terracotta Objects.



1. Miscellaneous Terracotta Objects.



2. Sling-balls of Stone (two left) and Terracotta (two right).